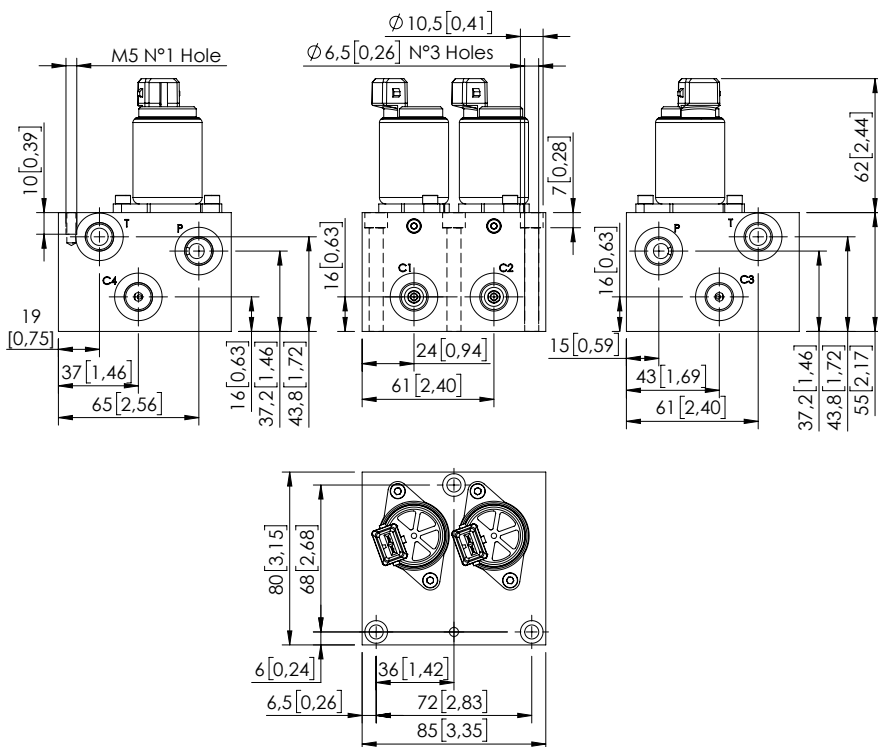


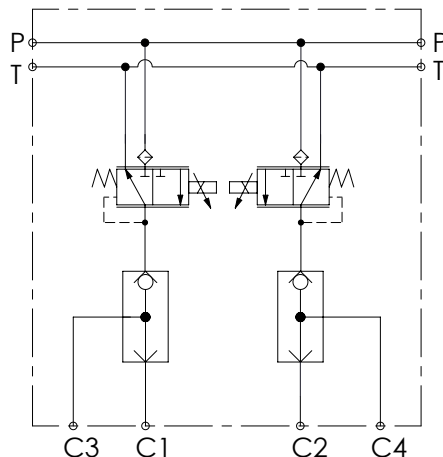
PILOT BLOCK

BDEZ-005-LLSI

PROPORTIONAL
PRESSURE REDUCING
PILOT MANIFOLD



Dimensions: mm [inches]



SPECIFICATIONS

Max. operating pressure: 50 bar (700 psi)

Max. operating pressure on port T: 30 bar (400 psi)

Rated flow: 5 l/min (1,3 gpm)

Manifold: Aluminium

Weight: 1,28 kg (61,7 lbs)

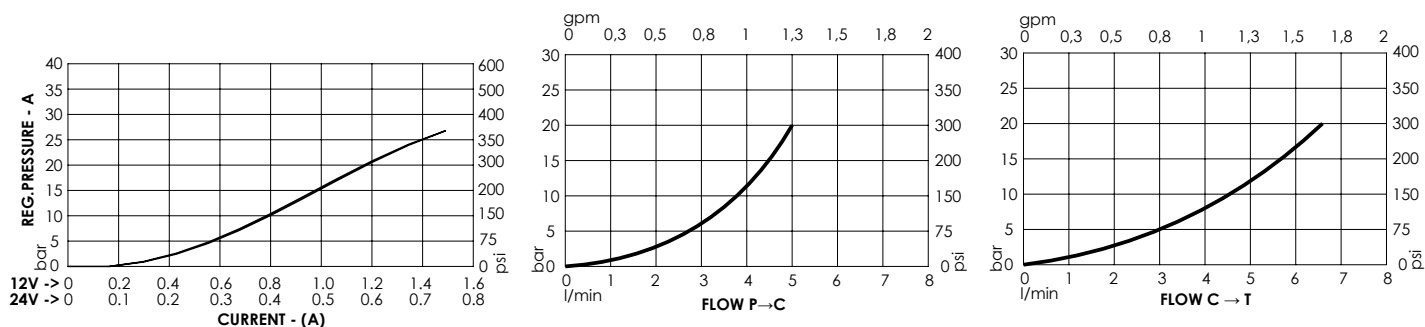
Contamination class to ISO 4406: See technical spec.

MTTF_d: 150 - 1200 years: See technical spec.

NOTES

For other configurations/quick codes not available in this catalogue page please consult factory

CURVES



ORDERING CODES

Quick code	Description	Ports	Regulated pressure range	Voltage	Connector type
BD000142	BDEZ-005-LLSI-02-G14-N050-NBAJ	C,P,T: G 1/4"	0-25 bar (0-350 psi)	24V DC	AMP JUNIOR
BD000127	BDEZ-005-LLSI-02-G14-N050-NAAJ	C,P,T: G 1/4"	0-25 bar (0-350 psi)	12V DC	AMP JUNIOR