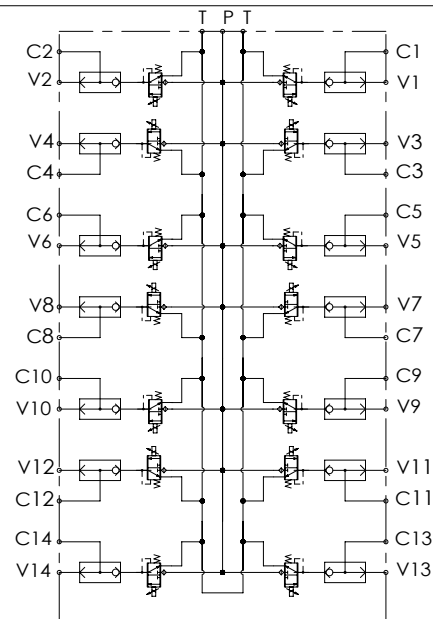


## NOTES

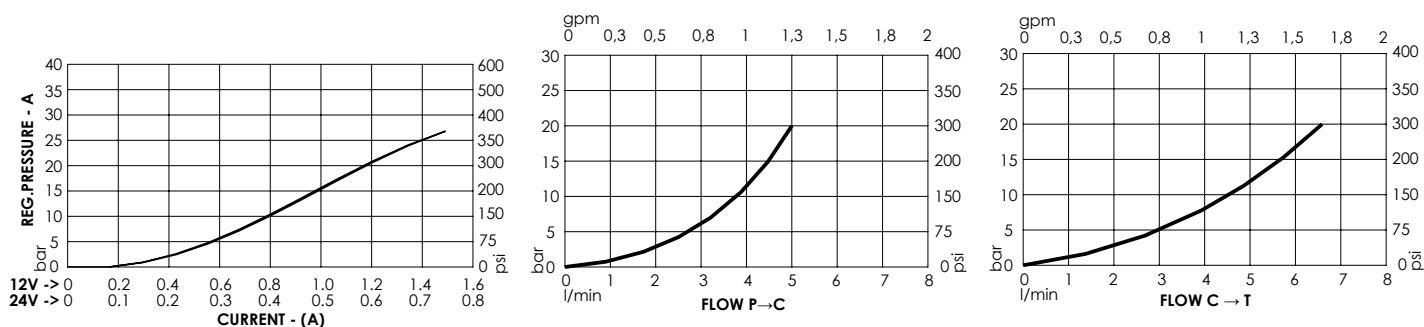
**For other configurations/quick codes not available in this catalogue page please consult factory**

## CURVES



## SPECIFICATIONS

<b>Max. operating pressure:</b>	<b>50 bar (700 psi)</b>
<b>Max. operating pressure on port T:</b>	<b>30 bar (400 psi)</b>
<b>Rated flow:</b>	<b>5 l/min (1,3 gpm)</b>
<b>Manifold:</b>	<b>Aluminium</b>
<b>Weight:</b>	<b>8,5 kg (18,7 lbs)</b>
<b>Contamination class to ISO 4406: See technical spec.</b>	
<b>MTTF<sub>d</sub>:</b>	<b>150 - 1200 years: See technical spec.</b>



## ORDERING CODES

Quick code	Description	Ports	Regulated pressure range	Voltage	Connector type
BD000203	BDEZ-005-LLSI-14-G14-N050-NBAJ	C,V,P,T: G 1/4"	0-25 bar (0-350 psi)	24V DC	AMP JUNIOR
BD000204	BDEZ-005-LLSI-14-G14-N050-NAAJ	C,V,P,T: G 1/4"	0-25 bar (0-350 psi)	12V DC	AMP JUNIOR