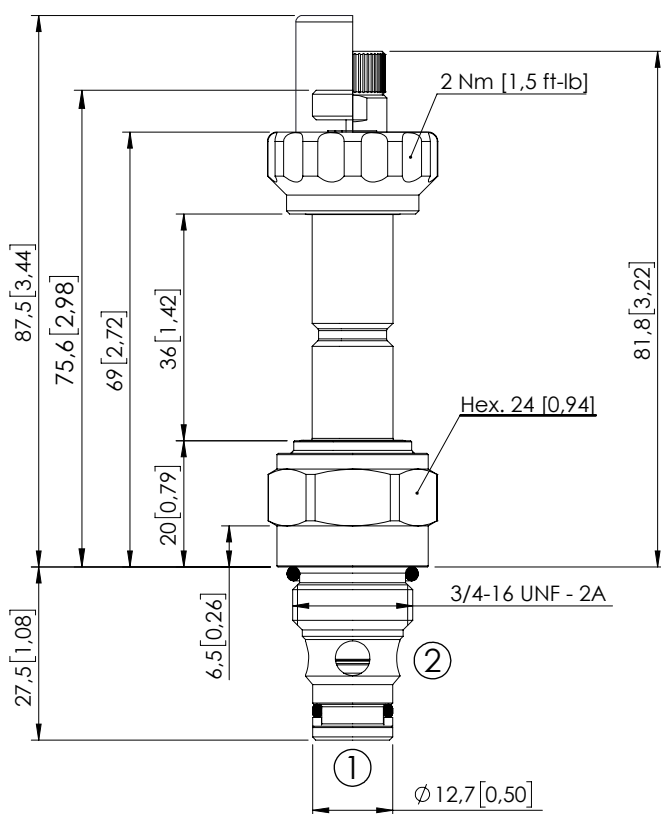
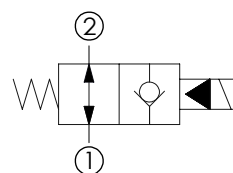


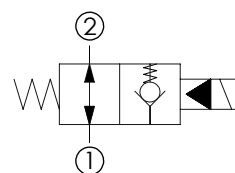
## SOLENOID OPERATED CARTRIDGE

**CEBN-060-NAFN-06**PILOT OPERATED  
POPPET TYPE

Dimensions: mm [inches]



With extra spring

**SPECIFICATIONS**

Max. operating pressure: 350/500 bar (5000/7200 psi)

Rated flow: 60 l/min (16 gpm)

Cavity: SAE-08-2N

Weight: 0,15 kg (0.33 lbs)

Min. voltage required: 90% of nominal

Coil type: M7 or M3 type

Ambient temperature: -20/+50 °C (-4/+122 °F)

Contamination class to ISO 4406: See technical spec.

Seal kit: RA900081

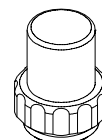
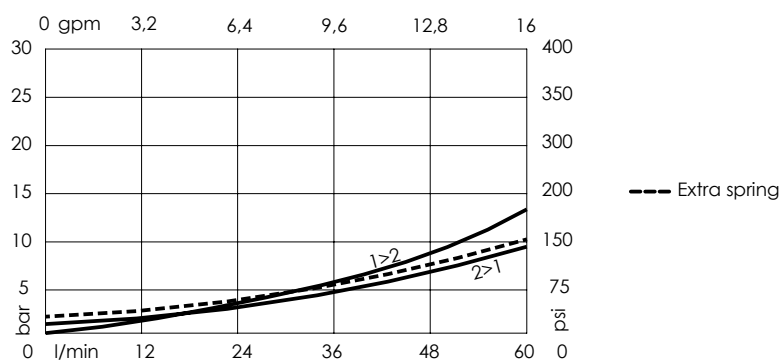
Installation torque: 45 - 50 Nm (33 - 37 ft-lb)

MTF<sub>d</sub>: 150 - 1200 years: See technical spec.**NOTES**

For other configurations/quick codes not available in this catalogue page please consult factory

**OPTIONS**

Standard

Push style  
overrideKnob style  
override**SEALING CAP**Ordering code:  
AT000113**CURVES****ORDERING CODES**

Quick code	Description	Options	Max operating pressure	Extra Spring
CE000236	CEBN-060-NAFN-06-S08-N350	Standard	350 bar (5000 psi)	No
CE000237	CEBN-060-NAFP-06-S08-N350	Push style override	350 bar (5000 psi)	No
CE000238	CEBN-060-NAFK-06-S08-N350	Knob style override	350 bar (5000 psi)	No
CE000483	CEBN-060-XAFN-06-S08-N350	Standard	350 bar (5000 psi)	Yes
CE000536	CEBN-060-NAFN-06-S08-N500	Standard	500 bar (7200 psi)	No
CE000537	CEBN-060-NAFP-06-S08-N500	Push style override	500 bar (7200 psi)	No
CE000538	CEBN-060-NAFK-06-S08-N500	Knob style override	500 bar (7200 psi)	No