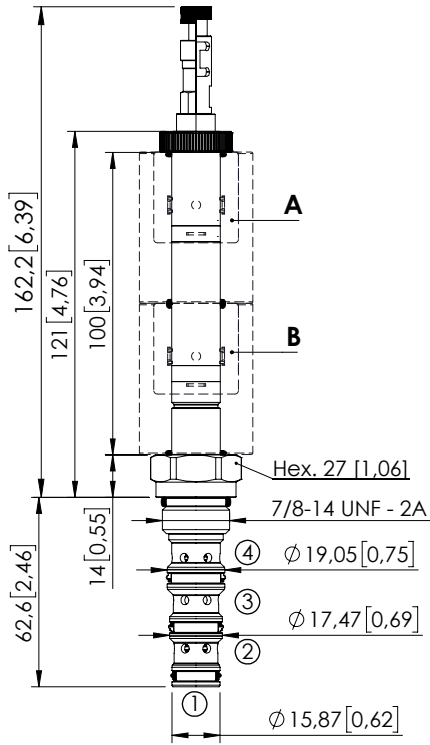


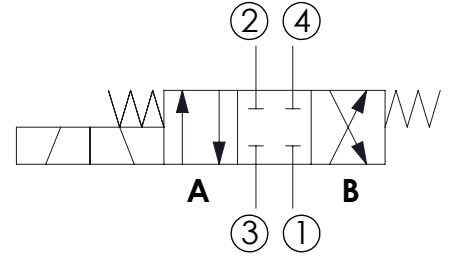
SOLENOID OPERATED CARTRIDGE

CEES-030-SEFN-51

DIRECT OPERATED
SPOOL TYPE



Dimensions: mm [inches]



SPECIFICATIONS

Max. operating pressure:	250 bar (3600 psi)
Rated flow:	30 l/min (8 gpm)
Cavity:	SAE-10-4N
Weight:	0.21 kg (0,68 lbs)
Min. voltage required:	90% of nominal
Coil type:	M16 type
Ambient temperature:	-20/+50 °C (-4/+122 °F)
Contamination class to ISO 4406:	See technical spec.
Seal kit:	RB600102
Installation torque:	55 - 62 Nm (41 - 46 ft-lb)
MTF _d :	150 - 1200 years: See technical spec.
Leakage:	60 cm ³ /min (@46 cSt) 3,7 in ³ /min (@46 cSt)

NOTES

For other configurations/quick codes not available in this catalogue page please consult factory

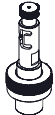
OPTIONS



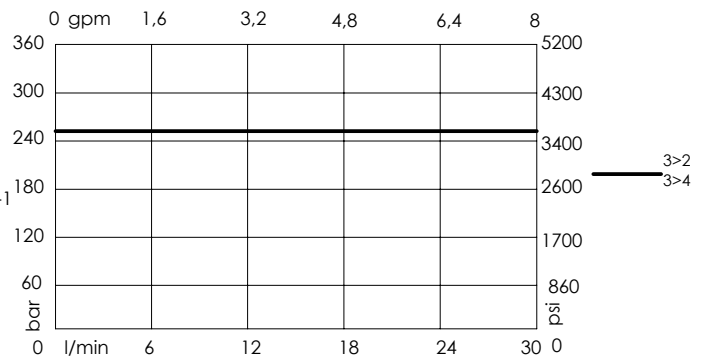
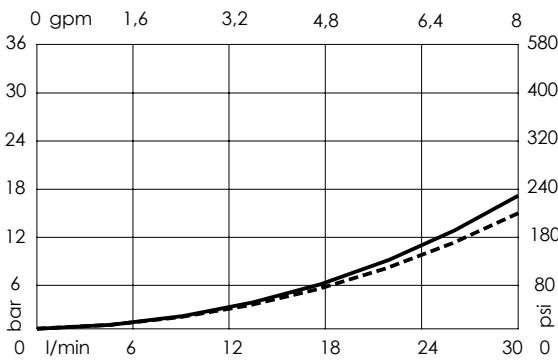
Standard



Push and pull
manual
override



Push pull and
twist manual
override



ORDERING CODES

Quick code	Description	Options
CE000999	CEES-030-SEFN-51-S10-N250	Standard
CE001000	CEES-030-SEFL-51-S10-N250	Push and pull manual override
CE001001	CEES-030-SEFG-51-S10-N250	Push pull and twist manual override