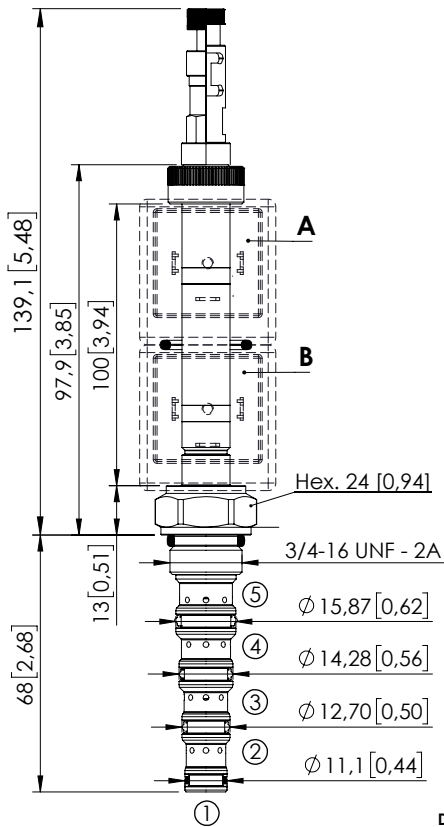


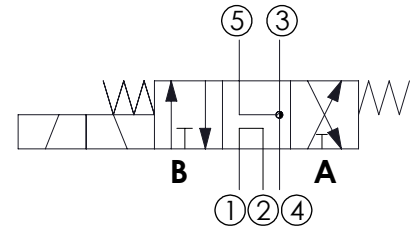
SOLENOID OPERATED CARTRIDGE

# CEFS-010-SEFN-104

DIRECT OPERATED  
SPOOL TYPE



Dimensions: mm [inches]



## SPECIFICATIONS

Max. operating pressure:	250 bar (3600 psi)
Rated flow:	10 l/min (3 gpm)
Cavity:	SAE-08-5N
Weight:	0.25 kg (0.68 lbs)
Min. voltage required:	90% of nominal
Coil type:	M7 or M3 type
Ambient temperature:	-20/+50 °C (-4/+122 °F)
Contamination class to ISO 4406:	See technical spec.
Seal kit:	RB900106
Installation torque:	45 - 50 Nm (41 - 46 ft-lb)
MTF <sub>d</sub> :	150 - 1200 years: See technical spec.
Leakage:	120 cm <sup>3</sup> /min (@46 cSt) 7.3 in <sup>3</sup> /min (@46 cSt)

## NOTES

For other configurations/quick codes not available in this catalogue page please consult factory

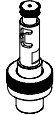
## OPTIONS



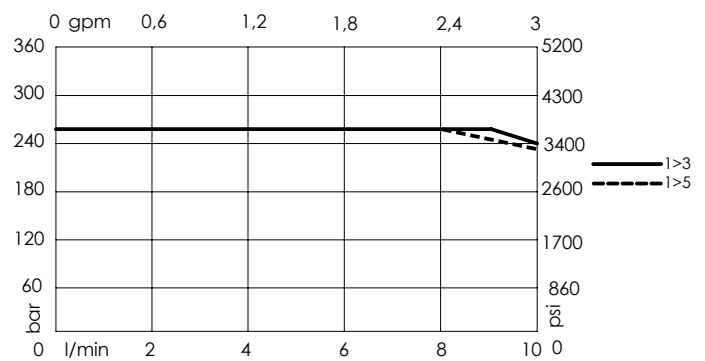
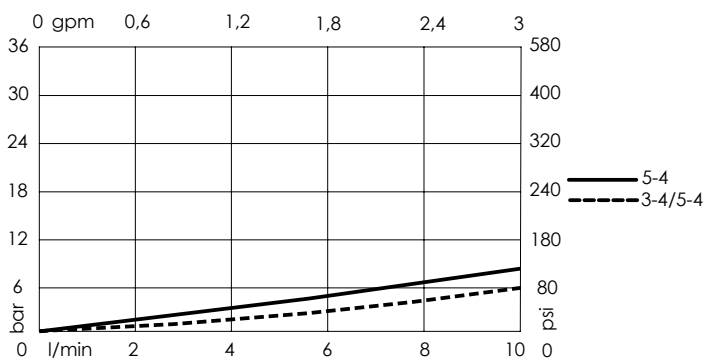
Standard



Push and pull manual override



Push pull and twist manual override



## ORDERING CODES

Quick code	Description	Options
CE001808	CEFS-010-SEFN-104-S08-N250	Standard
CE001809	CEFS-010-SEFL-104-S08-N250	Push and pull manual override
CE001810	CEFS-010-SEFG-104-S08-N250	Push pull and twist manual override