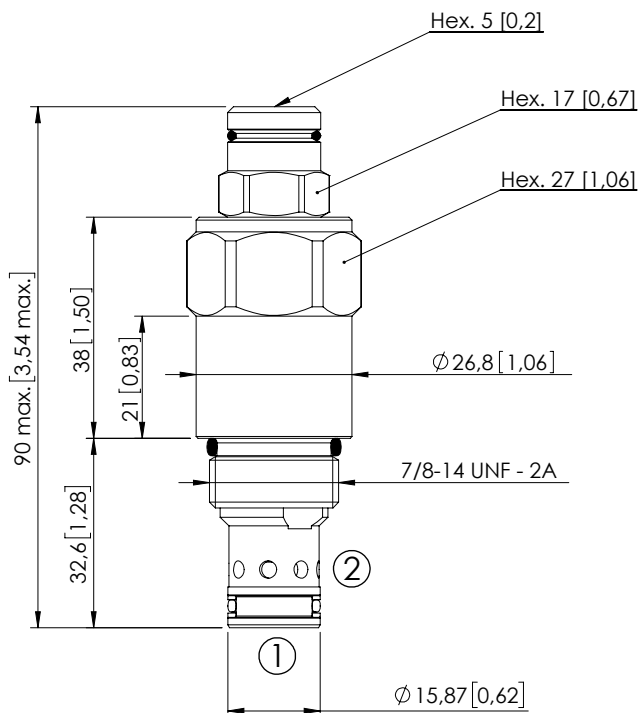


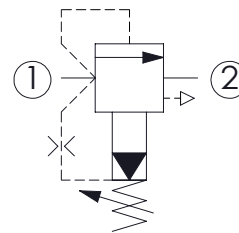
RELIEF VALVE

CPLT-120-PSNA

PILOT OPERATED
SPOOL TYPE
COMPENSATED



Dimensions: mm [inches]



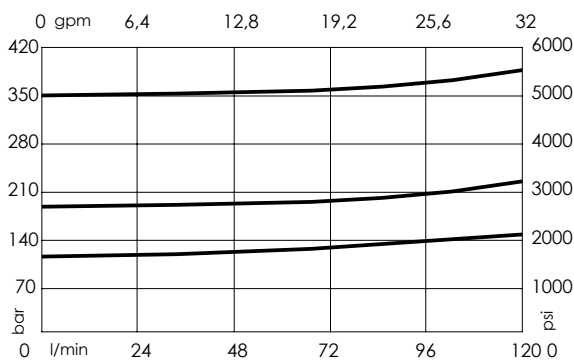
SPECIFICATIONS

| | |
|----------------------------------|--|
| Max. operating pressure: | 350 bar (5000 psi) |
| Rated flow: | 120 l/min (32 gpm) |
| Cavity: | SAE-10-2N |
| Weight: | 0.25 kg (0,55 lbs) |
| Contamination class to ISO 4406: | See technical spec. |
| Seal kit: | RB700082 |
| Installation torque: | 55 - 62 Nm (42 - 46 ft-lb) |
| MTTFd: | 150 - 1200 years: See technical spec. |
| Leakage: | 200 cm ³ /min @ 200 bar 12,2 in ³ /min @ 2800 psi |

NOTES

For other configurations/quick codes not available in this catalogue page please consult factory

CURVES



ORDERING CODES

| Quick code | Description | Standard setting (cracking pressure) | Adjustment range | Pressure increase |
|------------|---------------------------|--------------------------------------|-----------------------------|------------------------------|
| CP000070 | CPLT-120-PSNA-HN-S10-N350 | 350 bar (5000 psi) | 140-350 bar (2000-5000 psi) | 114 bar/turn (1600 psi/turn) |
| CP000071 | CPLT-120-PSNA-HN-S10-N200 | 200 bar (2900 psi) | 70-210 bar (1000-3000 psi) | 69 bar/turn (950 psi/turn) |
| CP000072 | CPLT-120-PSNA-HN-S10-N100 | 100 bar (1400 psi) | 20-120 bar (290-1700 psi) | 37 bar/turn (500 psi/turn) |
| | | | | |
| | | | | |