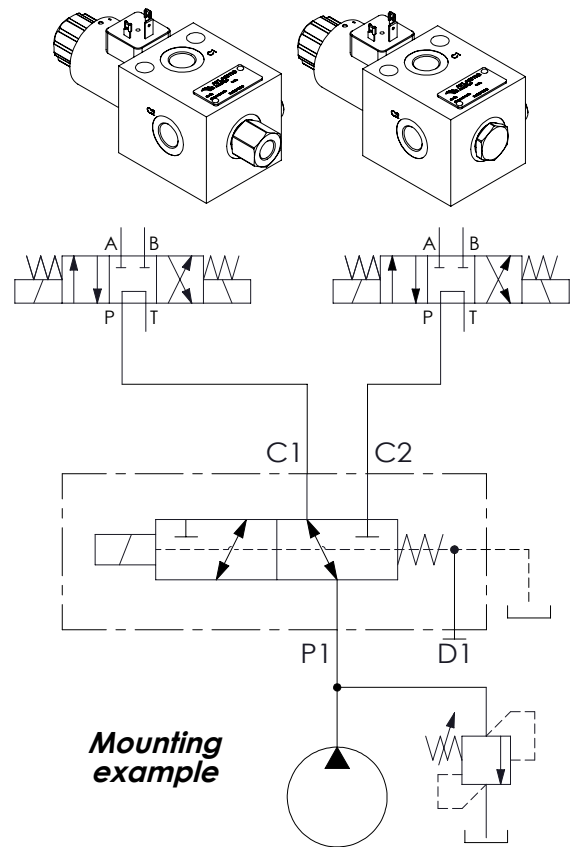


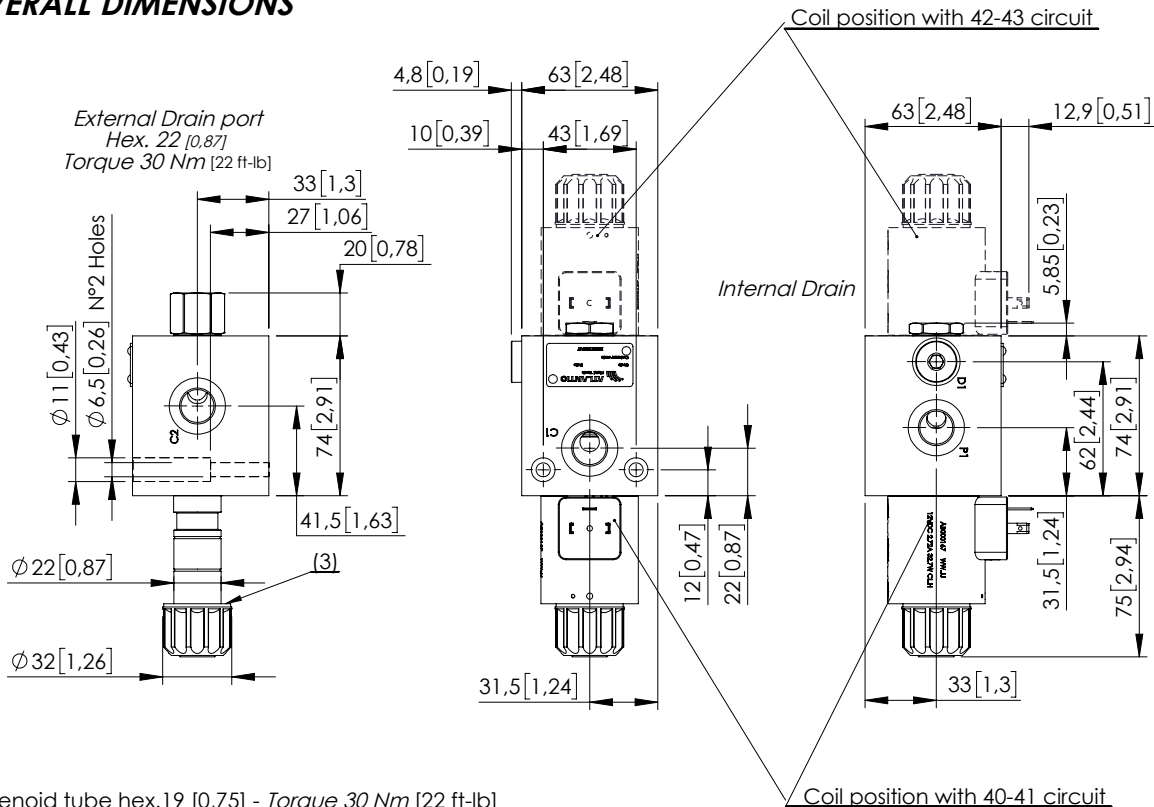
**	Circuit	Transit position
40		
41		
42		
43		

Technical data		
Rated flow		l/min (gpm) 50 (13)
Operating pressure	with internal drain "N"	bar (psi) 250 (3600)
	with external drain "E"	bar (psi) 310 (4500)
Valve weight		Kg (lb) 2,6 (5,7)



Dimensions: mm [inches]

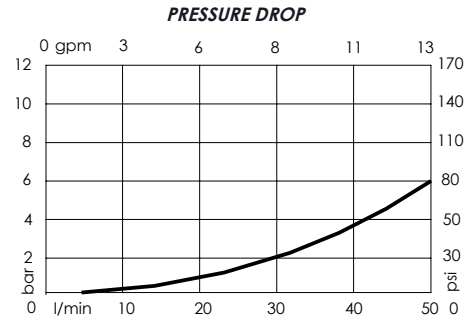
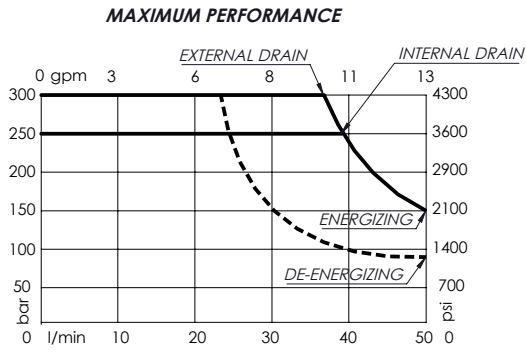
OVERALL DIMENSIONS



- (1) Solenoid tube hex.19 [0,75] - Torque 30 Nm [22 ft-lb]
- (2) Ring nut for coil locking - Torque 5-6 Nm [4-5 ft-lb]
- (3) O-Ring Ø 21,5x2 [0,85x0,08]

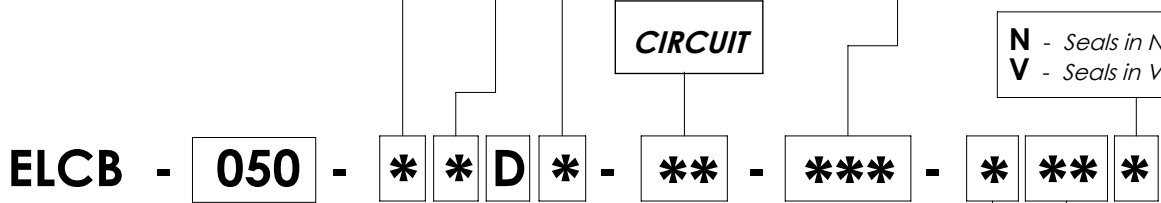
Characteristic curves

Measured with hydraulic fluid ISO-VG46 at 40°±5°C (104° F ±41°F)



Internal leakage on C ports: MAX 25 cm³/min (1.5 in³/min) Mineral oil with 32 cSt viscosity, at 40° C (104° F) and 100 bar (1400 psi) pressure.

*	OPERATED	<i>Circuit</i>																		
E	Electric 																			
N	Hydraulic/pneumatic 																			
<p>(4) Hydraulic or pneumatic pilot connector: Torque 20-22 Nm [15-16 ft-lb]</p> <p>With external drain Pilot Pressure Min. 5 bar [70 psi]</p> <p>With internal drain Pilot Pressure is 1/10 of the working pressure</p>																				
*	MANUAL OVERRIDE																			
S	Standard 																			
V	Screw 																			
N	Without manual override (Only for hydraulic version)																			
*	DRAIN	<i>Circuit</i>																		
N	Internal																			
E	External																			
<table border="1"> <tr> <th colspan="3">PORTS</th> </tr> <tr> <td>***</td> <td>Main (C)</td> <td>Drain (D)</td> </tr> <tr> <td>G38</td> <td>3/8" Gas</td> <td>1/4" Gas</td> </tr> <tr> <td></td> <td></td> <td></td> </tr> <tr> <td></td> <td></td> <td></td> </tr> <tr> <td colspan="3">Other port sizes available</td> </tr> </table>			PORTS			***	Main (C)	Drain (D)	G38	3/8" Gas	1/4" Gas							Other port sizes available		
PORTS																				
***	Main (C)	Drain (D)																		
G38	3/8" Gas	1/4" Gas																		
Other port sizes available																				



*	Voltage (V)	Resistance (Ω) ± 7%	Power (W)	Current (A)
-	Without coil			
A	12 DC	4,41	32,7	2,72
B	24 DC	18,6	31	1,29
Other voltages available on request				

*	COIL	Type	Protection class
-	Without coil		
HR	DIN 43650 - ISO 4400 Class H	M12	IP65
AJ	AMP JUNIOR Class H	M12	IP65
DT	DEUTSCH DT04-2P-L Class H	M12	IP69