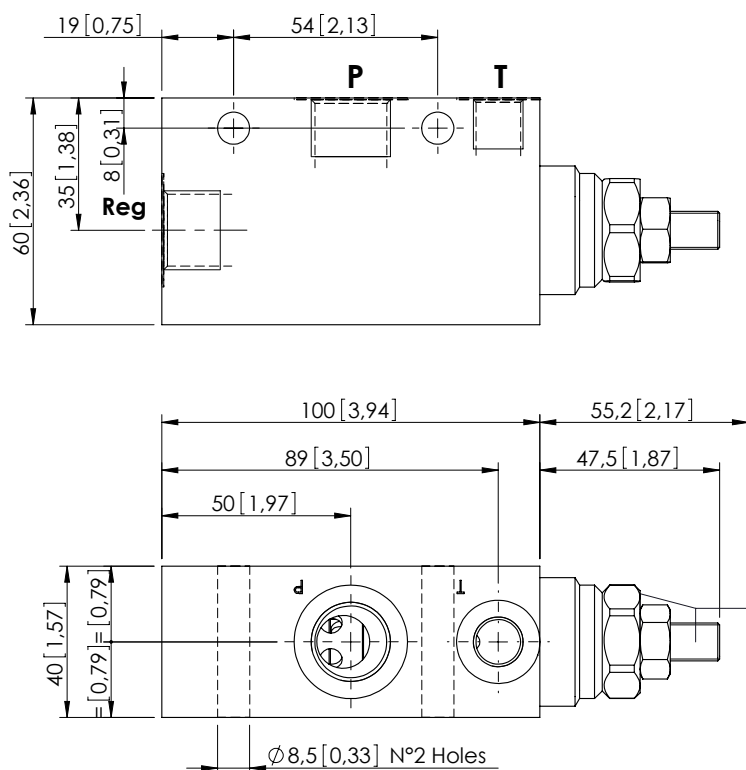


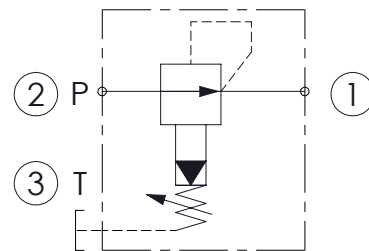
PRESSURE REDUCING

KPRR-140-PNNR

PILOT OPERATED
SPOOL TYPE



Dimensions: mm [inches]



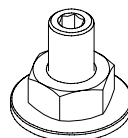
SPECIFICATIONS

Max. operating pressure:	250 bar (3600 psi)
Rated flow:	140 l/min (37 gpm)
Cavity:	SAE-12-3N
Weight:	0,8 kg (1,76 lbs)
Manifold:	Aluminium
Contamination class to ISO 4406:	See technical spec.
MTF _d :	150 - 1200 years: See technical spec.

NOTES

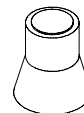
For other configurations/quick codes not available in this catalogue page please consult factory

OPTIONS



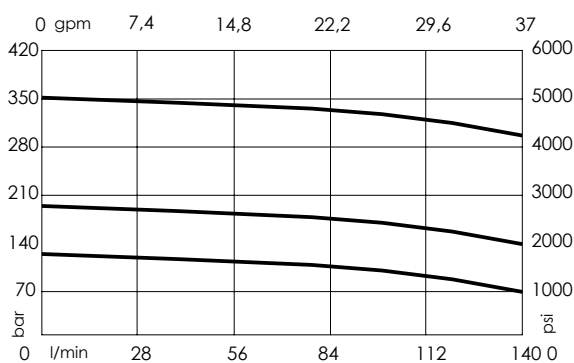
Adjustment
with Screw

SEALING CAP



Ordering code:
AT000022

CURVES



ORDERING CODES

Quick code	Description	Ports	Standard setting	Adjustment range	Pressure increase	Options
KR000017	KPRR-140-PNNR-HN-G12-N250	P-Reg: G 1/2" T: G 1/4"	250 bar (3600 psi)	140-250 bar (2000-5000 psi)	114 bar/turn (1600 psi/turn)	Adjustment with Screw
KR000019	KPRR-140-PNNR-HN-G12-N200	P-Reg: G 1/2" T: G 1/4"	200 bar (2900 psi)	70-210 bar (1000-3000 psi)	69 bar/turn (950 psi/turn)	Adjustment with Screw
KR000018	KPRR-140-PNNR-HN-G12-N100	P-Reg: G 1/2" T: G 1/4"	100 bar (1400 psi)	10-120 bar (150-1700 psi)	37 bar/turn (500 psi/turn)	Adjustment with Screw