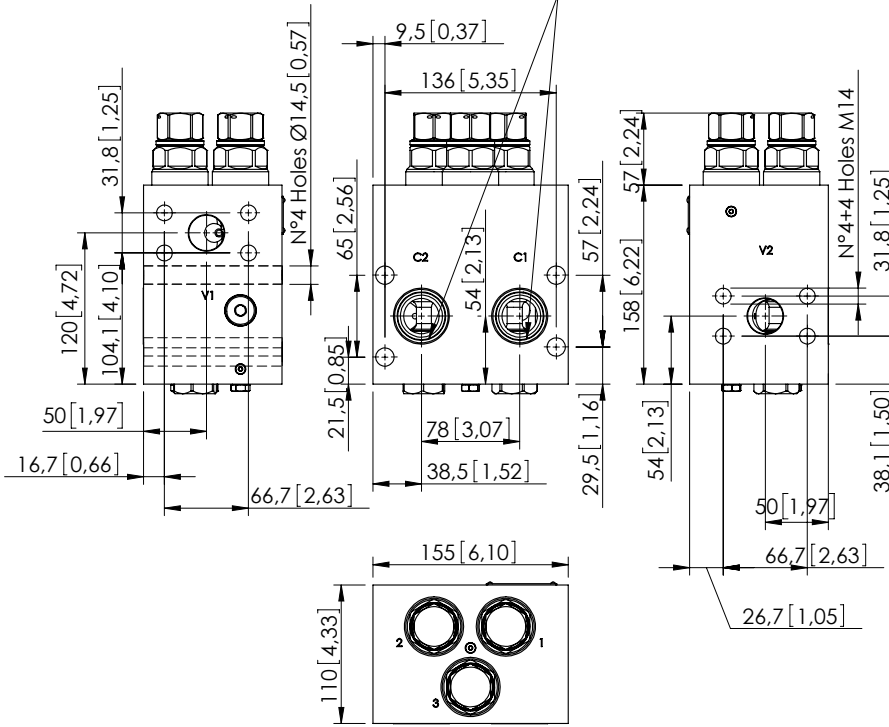
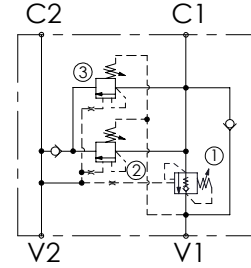


O-Ring 36,09 X 3,53 - V80  
[1,421 x 0,139]



Dimensions: mm [inches]



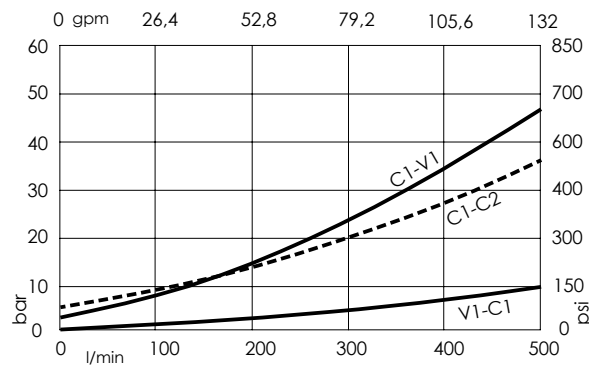
## SPECIFICATIONS

Max. operating pressure:	420 bar (6000 psi)
Rated flow:	300 l/min (79 gpm)
Manifold:	Steel
Weight:	18.88 kg (41,49 lbs)
Contamination class to ISO 4406:	See technical spec.
MTF <sub>a</sub> :	150 - 1200 years: See technical spec.

## NOTES

Valve for heavy duty working cycles with viton seals and reinforced plugs.  
Designed for crusher scissors.  
For other configurations/quick codes not available in this catalogue page please consult factory

## CURVES



## ORDERING CODES

Quick code	Description	Pilot ratio	Main ports size	Standard setting Q=5 l/min (1,3 gpm)	Adjustment range	Pressure increase
MB000132	MRSN-300-ABNE-06-S11-V420	6:1	V1,V2 : 1-1/4 SAE 6000 C1,C2 : Ø 28	250 bar (3600 psi)	120-360 bar (1700-5200 psi)	104 bar/turn (1500 psi/turn)