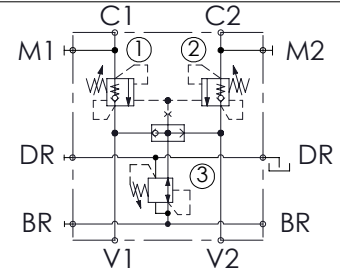
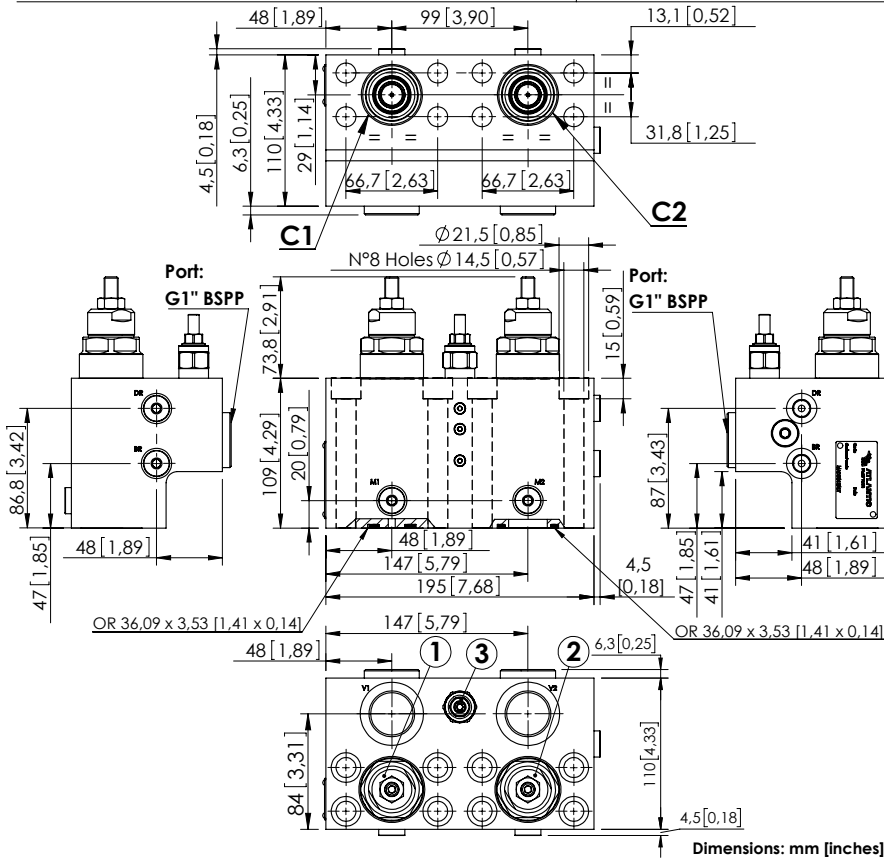


MBDN-320-AMSR

OVERCENTRE
WITH BRAKE RELEASE



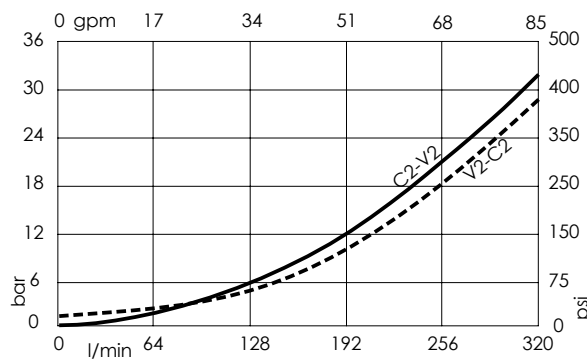
SPECIFICATIONS

Max. operating pressure:	350 bar (5000 psi)
Rated flow:	320 l/min (85 gpm)
Manifold:	Steel
Weight:	13,7 kg (30,2 lbs)
Contamination class to ISO 4406:	See technical spec.
MTF _d :	150 - 1200 years: See technical spec.

NOTES

- Setting: at least 1.3 times the load induced pressure.
- Designed for REXROTH A2FE 107-125 160-180 motors.
- For other configurations/quick codes not available in this catalogue page please consult factory

CURVES



ORDERING CODES

Quick code	Description	Pilot ratio	Main ports size	Standard setting Q=5 l/min (1,3 gpm)	Adjustment range	Pressure increase
MB000563	MBDN-320-AMSR-08-S11-N350	8:1	V1,V2: G1" C1,C2: 1-1/4" SAE 6000 BR,DR,M1,M2: G1/4"	① ② 350 bar (5000 psi) ③ 40 bar (550 psi)	① ② 140-350 bar (2000-5000 psi) ③ 10-60 bar (150-850 psi)	① ② 56 bar/turn (800 psi/turn) ③ 6,5 bar/turn (100 psi/turn)