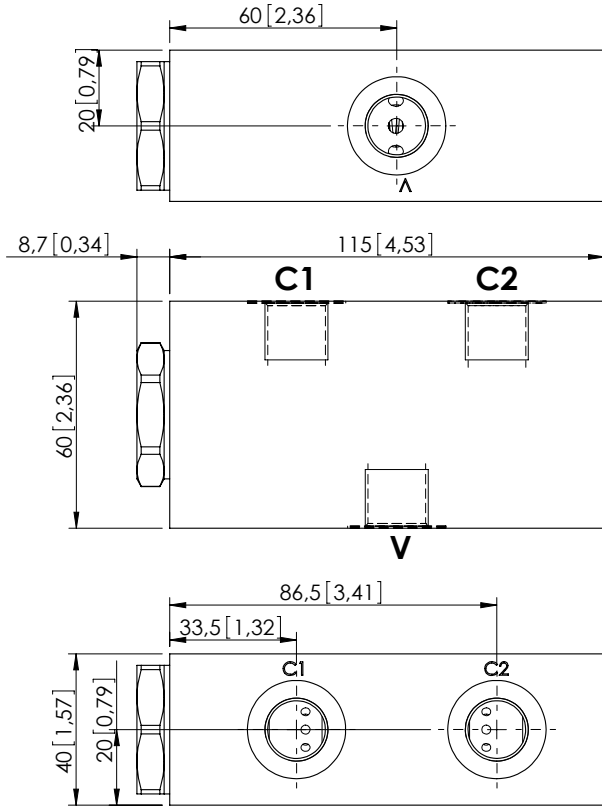
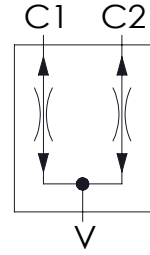


# MFDT-040-BFTR



Dimensions: mm [inches]



## SPECIFICATIONS

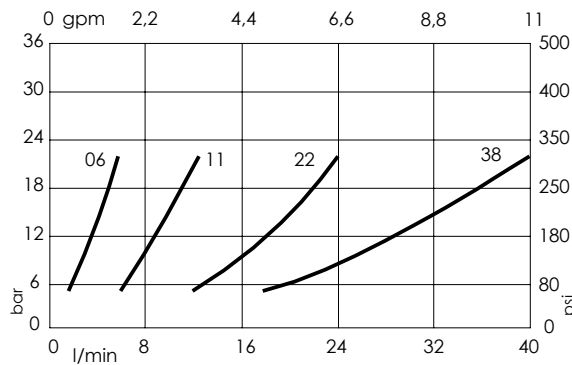
Max. operating pressure:	210 bar (3000 psi)
Division or combination:	50 % - 50 %
Manifold:	Aluminium
Weight:	0,88 kg (1,94 lbs)
Cavity:	VP000242
Contamination class to ISO 4406:	See technical spec.
MTTFa:	150 - 1200 years: See technical spec.

## NOTES

Flow divider accuracy:  $\pm 7/8\%$  between 40-100% of max. input flow.

For other configurations/quick codes not available in this catalogue page please consult factory

## CURVES



## ORDERING CODES

Quick code	Description	Main ports size	Inlet range flow
MF000076	MFDT-040-BFTR-06-G38-N210	V:G3/8"; C1,C2:G 3/8"	2,8 - 5,8 l/min (0,7-1,5 gpm)
MF000077	MFDT-040-BFTR-11-G38-N210	V:G3/8"; C1,C2:G 3/8"	6,5 - 11 l/min (2-3 gpm)
MF000078	MFDT-040-BFTR-22-G38-N210	V:G3/8"; C1,C2:G 3/8"	13 - 22 l/min (3,5-6 gpm)
MF000075	MFDT-040-BFTR-38-G38-N210	V:G3/8"; C1,C2:G 3/8"	25 - 38 l/min (7-10 gpm)
MF000080	MFDT-040-BFTR-06-G12-N210	V:G1/2"; C1,C2:G 3/8"	2,8 - 5,8 l/min (0,7-1,5 gpm)
MF000081	MFDT-040-BFTR-11-G12-N210	V:G1/2"; C1,C2:G 3/8"	6,5 - 11 l/min (2-3 gpm)
MF000082	MFDT-040-BFTR-22-G12-N210	V:G1/2"; C1,C2:G 3/8"	13 - 22 l/min (3,6-6 gpm)
MF000079	MFDT-040-BFTR-38-G12-N210	V:G1/2"; C1,C2:G 3/8"	25 - 38 l/min (7-10 gpm)