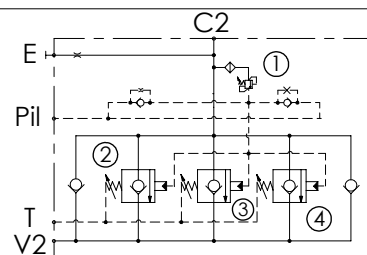
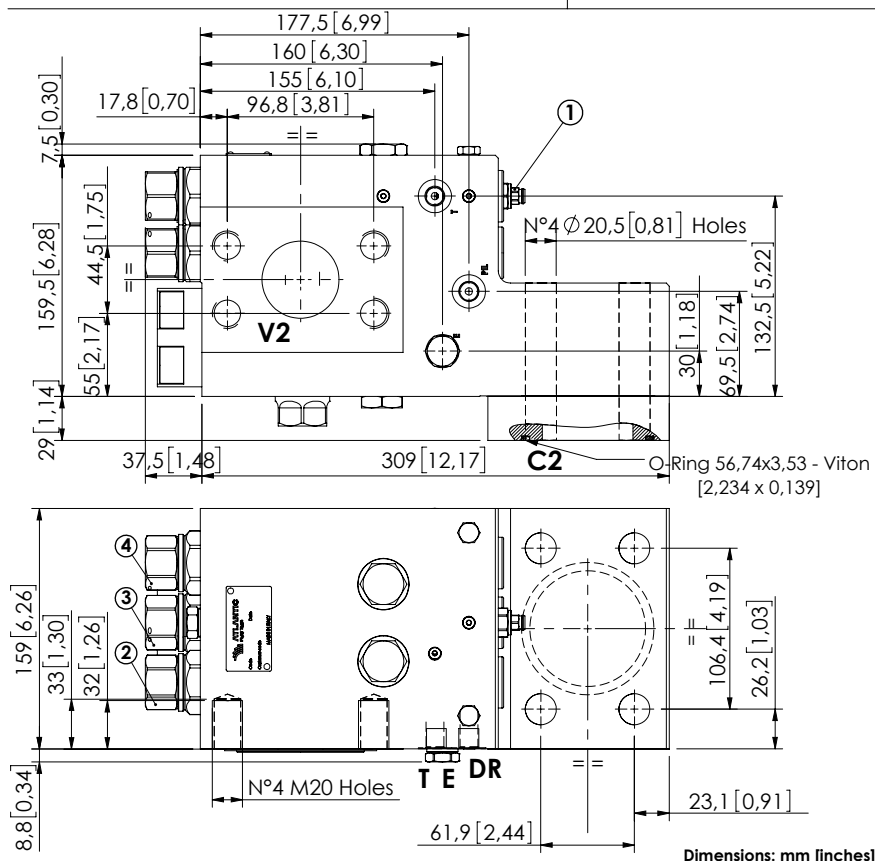


CHECK AND METERING VALVE

MLLT-1500-AAGL

FLANGED TYPE
3" SAE 3000 / 2" SAE 6000
LEFT VERSION



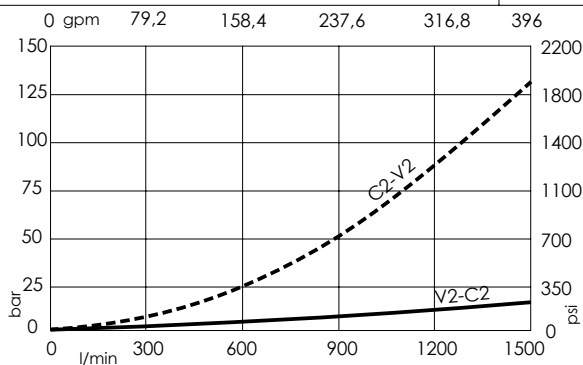
SPECIFICATIONS

Max. operating pressure:	420 bar (6000 psi)
Rated flow:	1500 l/min (396 gpm)
Manifold:	Steel
Weight:	47.14 kg (103,9 lbs)
Contamination class to ISO 4406:	See technical spec.
MTFa:	150 - 1200 years: See technical spec.

NOTES

When correctly adjusted for the specific excavator installation, these valves meet the requirement of ISO 8643.
For other configurations/quick codes not available in this catalogue page please consult factory

CURVES



ORDERING CODES

Quick code	Description	Main ports size	Standard setting	Adjustment range	Pressure increase
ML000163	MLLT-1500-AAGL-00-S30-N420	V2: 2" SAE 6000 C2: 3" SAE 3000 E, Pil, T: G 1/4"	① 400 bar @ 5 l/min (5800 psi @ 1,3 gpm) ② ④ 8.5 bar Crack. pr. (120 psi) ③ 7.5 bar Crack. pr. (100 psi)	① 200-420 bar (2800-6000 psi) ② ③ ④ 3-15 bar (50-200 psi)	① 236 bar/turn (3400 psi/turn) ② ③ ④ 3,4 bar/turn (50 psi/turn)