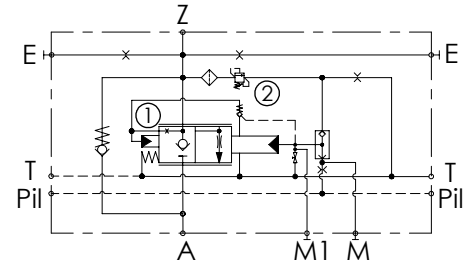
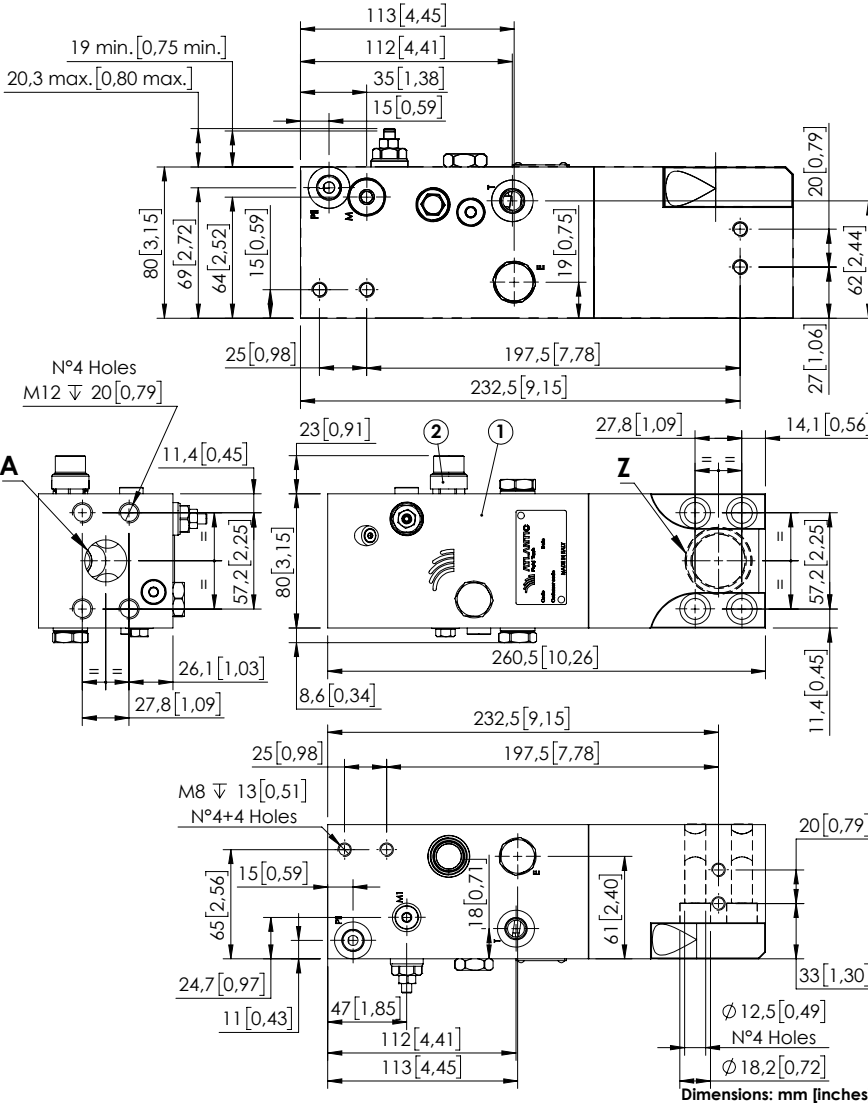


CHECK AND METERING VALVE

MLNT-350-AAGN

FLANGED TYPE
1" SAE 6000



SPECIFICATIONS

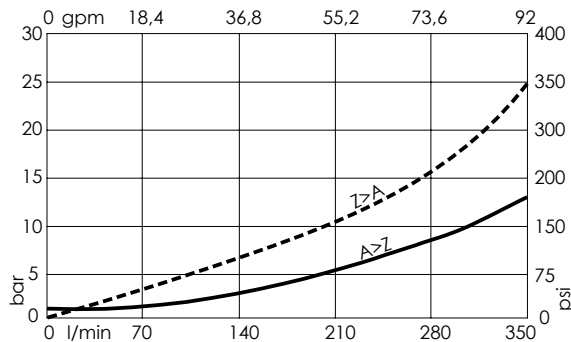
Max. operating pressure:	420 bar (6000 psi)
Rated flow:	350 l/min (92 gpm)
Manifold:	Steel
Weight:	10.18 kg (22.47 lbs)
Contamination class to ISO 4406:	See technical spec.
MTTFa:	150 - 1200 years: See technical spec.

NOTES

When correctly adjusted for the specific excavator installation, these valves meet the requirement of ISO 8643.

For other configurations/quick codes not available in this catalogue page please consult factory

CURVES



ORDERING CODES

Quick code	Description	Main ports size	Standard setting	Adjustment range	Pressure increase
ML000271	MLNT-350-SAGN-00-S10-V420	Z,A: 1" SAE 6000 E,T,Pii,M: G1/4" M1: G1/8"	① 5.5 bar Cracking press. (75 psi Cracking press.) ② 420 bar @5 l/min (6000 psi @1.3 gpm)	① 3-17 bar (50-250 psi) ② 200-420 bar (2900-6000 psi)	① 2.4 bar/turn (35 psi/turn) ② 236 bar/turn (3400 psi/turn)