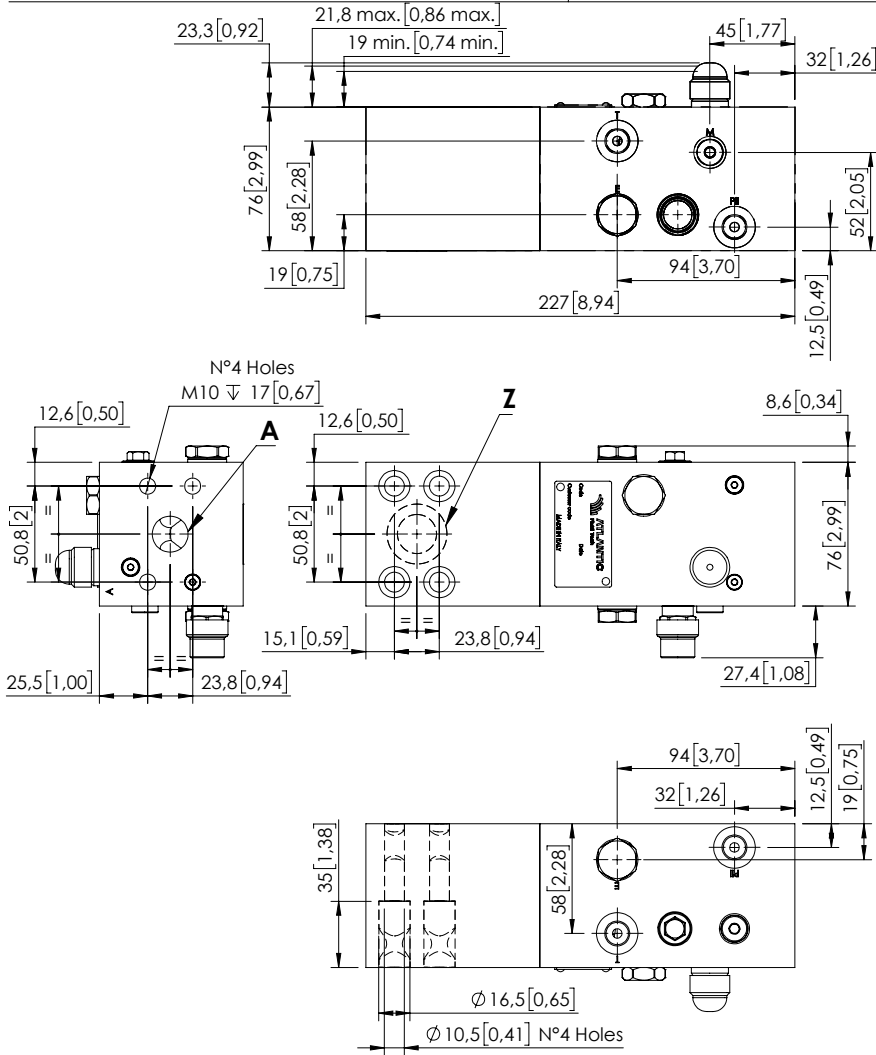


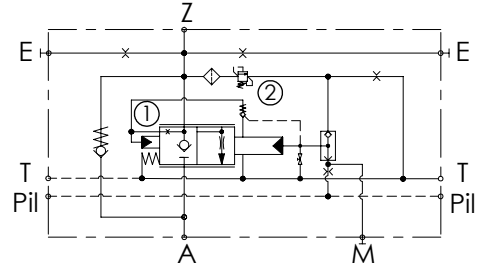
CHECK AND METERING VALVE

# MLNT-250-AAGN

FLANGED TYPE  
3/4" SAE 6000



Dimensions: mm [inches]



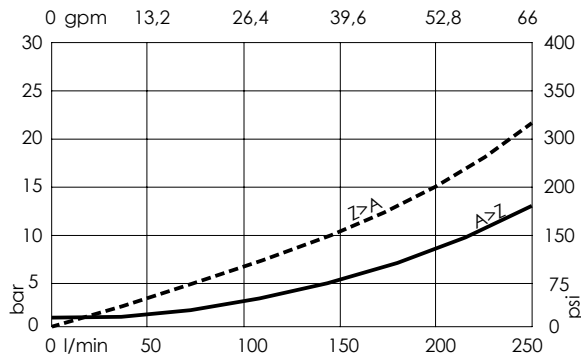
## SPECIFICATIONS

Max. operating pressure:	420 bar (6000 psi)
Rated flow:	250 l/min (66 gpm)
Manifold:	Steel
Weight:	8.54 kg (18.32 lbs)
Contamination class to ISO 4406:	See technical spec.
MTF <sub>a</sub> :	150 - 1200 years: See technical spec.

## NOTES

When correctly adjusted for the specific excavator installation, these valves meet the requirement of ISO 8643.  
For other configurations/quick codes not available in this catalogue page please consult factory

## CURVES



## ORDERING CODES

Quick code	Description	Main ports size	Standard setting	Adjustment range	Pressure increase
ML000900	MLNT-250-AAGN-00-S34-N420	Z,A: 3/4" SAE 6000 E,T,Pil: G1/4" M: G1/8"	① 5,5 bar Cracking press. (75 psi Cracking press.) ② 420 bar @5 l/min (6000 psi @1,3 gpm)	① 3-10 bar (50-150 psi) ② 200-420 bar (2900-6000 psi)	① 1,8 bar/turn (25 psi/turn) ② 236 bar/turn (3400 psi/turn)