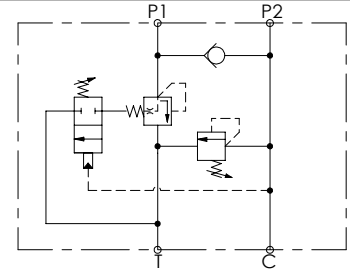
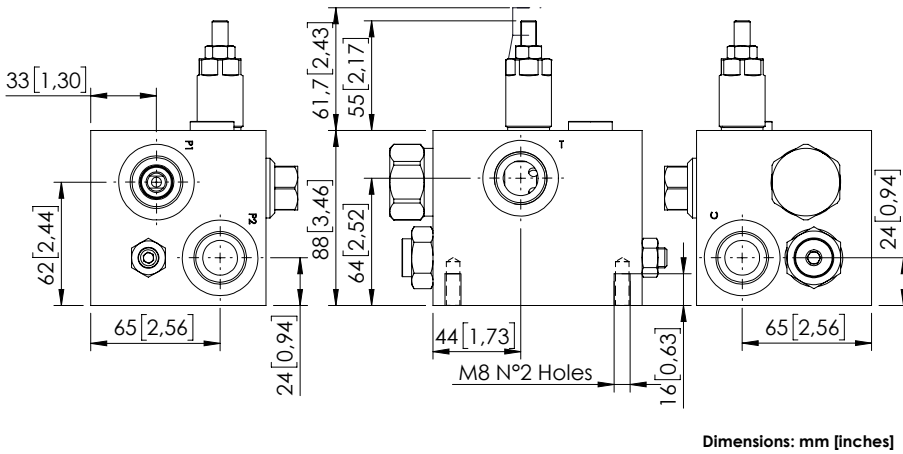
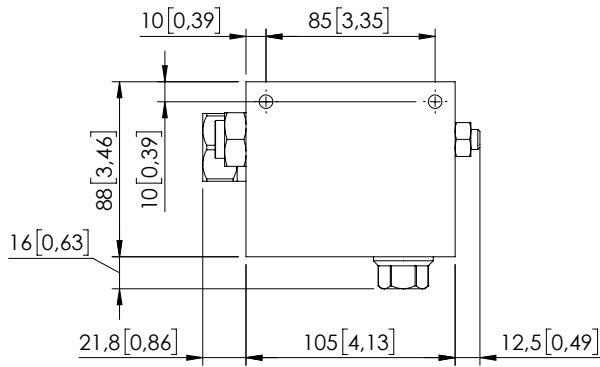


UNLOADING VALVE

MTSD-150-TLSN



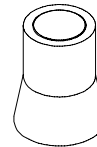
SPECIFICATIONS

| | |
|----------------------------------|---------------------------------------|
| Max. operating pressure: | 300 bar (4300 psi) |
| Rated flow: | 150 l/min (40 gpm) |
| Weight: | 2,54 kg (5,6 lbs) |
| Manifold: | See table |
| Contamination class to ISO 4406: | See technical spec. |
| MTFd: | 150 - 1200 years: See technical spec. |

NOTES

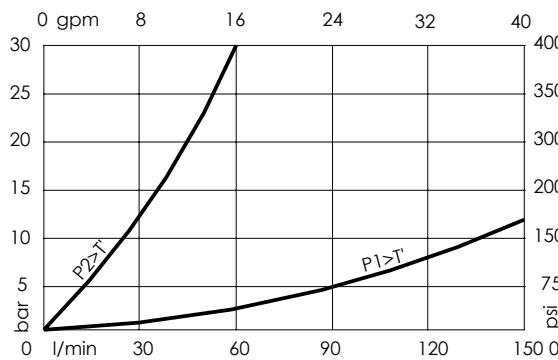
For other configurations/quick codes not available in this catalogue page please consult factory

SEALING CAP



Ordering code:
AT000020

CURVES



ORDERING CODES

| Quick code | Description | Manifold | Ports | Standard setting Q=5 l/min (1,3 gpm) | Setting range | Pressure increase bar/turn (psi/turn) |
|------------|---------------------------|-----------|------------------|--|--|--|
| MT000012 | MTSD-150-TLSN-00-G34-N300 | Aluminium | P1,P2,C,T: G3/4" | ① 50 bar (700 psi) ② 300 bar (4300 psi) | ① 15-100 bar (200-1500 psi) ② 100-300 bar (1500-4300 psi) | ① 23 (350) ② 91 (1300) |
| MT000016 | MTSD-150-SLSN-00-G34-N300 | Steel | P1,P2,C,T: G3/4" | ① 50 bar (700 psi) ② 300 bar (4300 psi) | ① 15-100 bar (200-1500 psi) ② 100-300 bar (1500-4300 psi) | ① 23 (350) ② 91 (1300) |
| | | | | | | |
| | | | | | | |
| | | | | | | |