



ATLANTIC
Fluid Tech

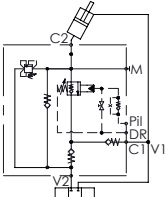
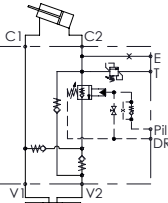
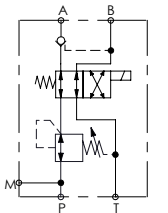
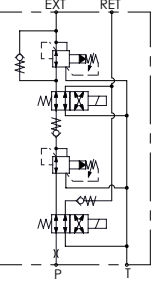
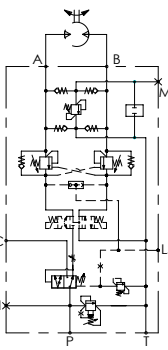
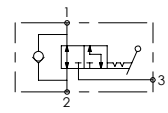
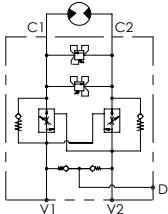
**SECTION
20**

Applications

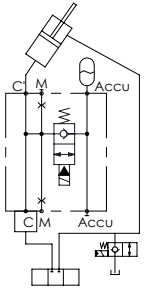
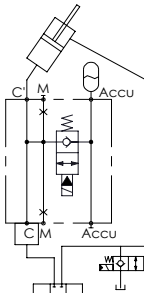
APPLICATIONS

Chapter	Valve type	Page
20. 1	Excavators - Mini excavators	20.100
20. 2	All terrain cranes	20.200
20. 3	Concrete pump cranes	20.300
20. 4	Salt sprayers	20.400
20. 5	Garbage compactors	20.500
20. 6	Hook loaders	20.600

APPLICATIONS - EXCAVATORS

Hydraulic scheme	Valve description	Valve type	Rated flow l/min (gpm)	Max. pressure bar (psi)	Installation	Main port size or cavity type	Page
	MLST-160-RLGR	Right version with oil recovery	160 (42)	420 (6000)	In line	G 3/4"	20.110
	MLST-250-RAUR	Right version	250 (66)	420 (6000)	Flanged	3/4" SAE 6000	20.120
	MLST-250-RAUL	Left version	250 (66)	420 (6000)	Flanged	3/4" SAE 6000	20.130
	BDEN-010-ALRV	Quick hitch	10 (3)	380 (5500)	In line	1/4" Jis	20.140
	BDEN-010-ALRU	Quick hitch	10 (3)	350 (5000)	In line	G 1/4"	20.150
	BDTF-100-ALLC	Excavator attachment function	100 (26)	350 (5000)	Flanged	G 1/2"	20.160
	BDTF-200-AFLC	Excavator attachment function	200 (53)	350 (5000)	Flanged	3/4" SAE 6000	20.170
	BDTF-300-AFLC	Excavator attachment function	300 (79)	350 (5000)	Flanged	1" SAE 6000	20.180
	MDRC-200-SLVN	Selector valve	200 (53)	500 (7200)	Flanged	3/4" SAE 6000	20.190
	BPTD-060-ALOU	Flow regulated with relief valve	60 (16)	350 (5000)	In line	G 1/2"	20.1100

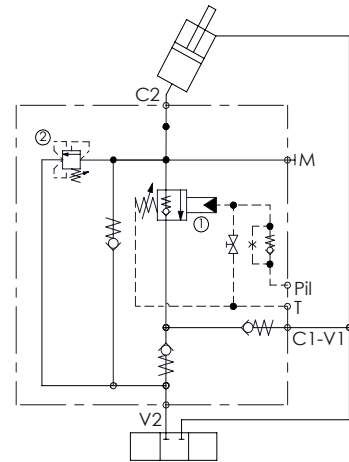
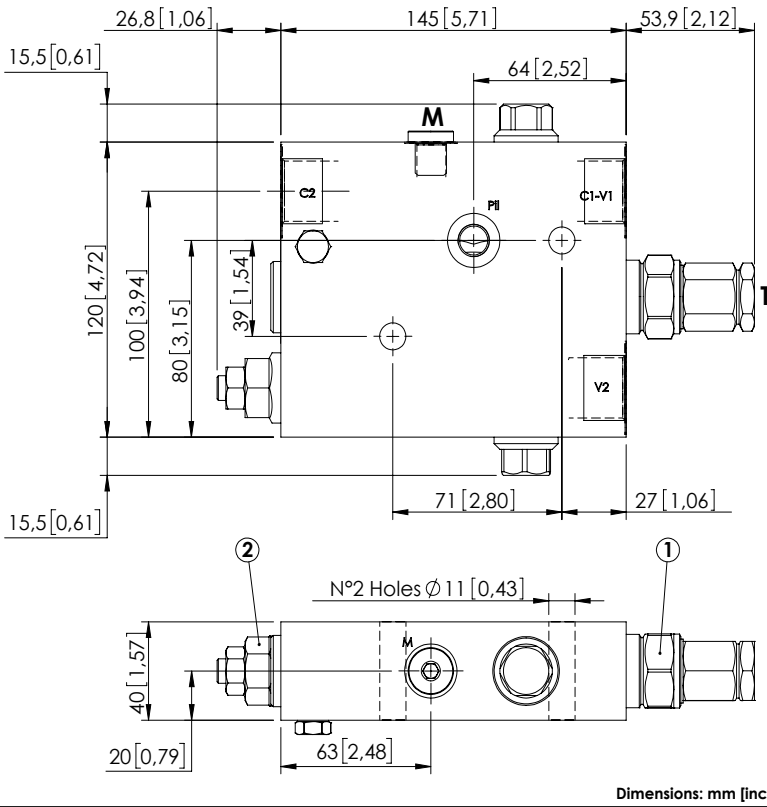
APPLICATIONS - EXCAVATORS

Hydraulic scheme	Valve description	Valve type	Rated flow l/min (gpm)	Max. pressure bar (psi)	Installation	Main port size or cavity type	Page
	<p>BDEN-070-AFEJ</p>	<p>Solenoid activated</p>	<p>70 (19)</p>	<p>420 (6000)</p>	<p>Flanged</p>	<p>3/4" SAE 3000/6000</p>	<p>20.1110</p>
	<p>BDEN-070-AFEJ</p>	<p>Solenoid activated</p>	<p>70 (19)</p>	<p>420 (6000)</p>	<p>Flanged</p>	<p>1" SAE 3000/6000</p>	<p>20.1120</p>

EXCAVATORS VALVE

MLST-160-RLGR

WITH OIL RECOVERY



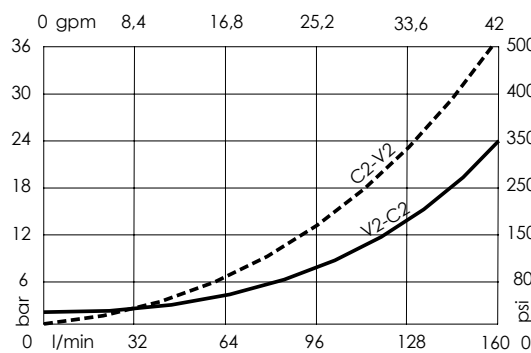
SPECIFICATIONS

Max. operating pressure:	420 bar (6000 psi)
Rated flow:	160 l/min (42 gpm)
Manifold:	Steel
Weight:	5,01 kg (11 lbs)
Contamination class to ISO 4406:	See technical spec.
MTTFd:	150 - 1200 years: See technical spec.

NOTES

When correctly adjusted for the specific excavator installation, these valves meet the requirement of ISO 8643.
For other configurations/quick codes not available in this catalogue page please consult factory

CURVES



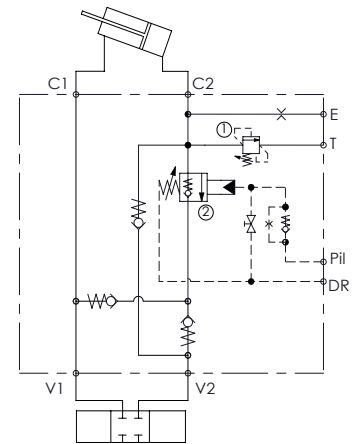
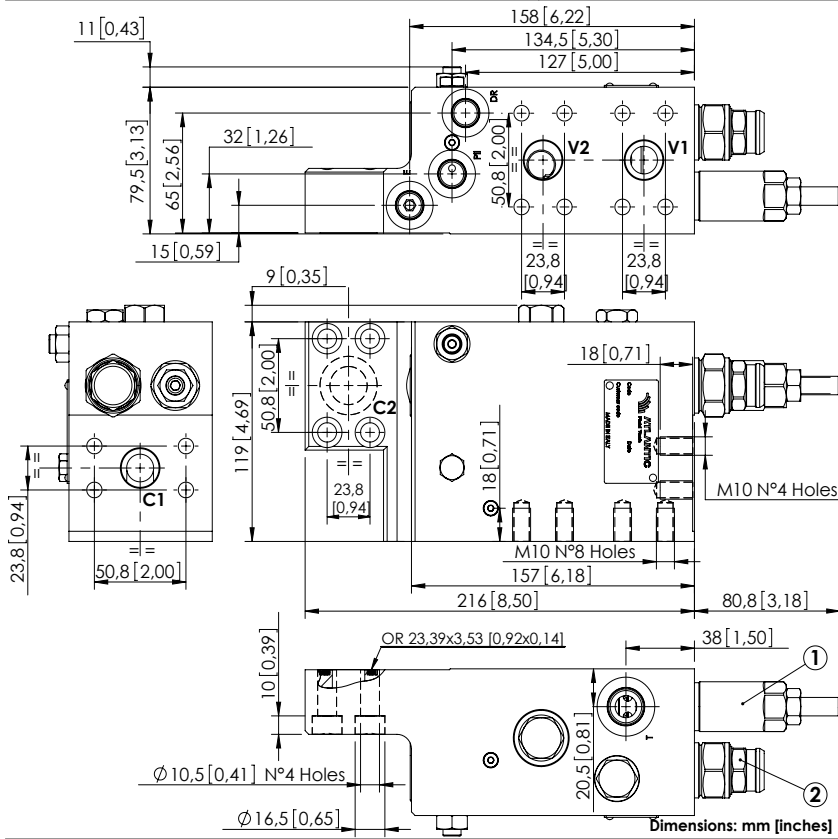
ORDERING CODES

Quick code	Description	Ports	Standard setting Q=5 l/min (1.3 gpm)	Adjustment range	Pressure increase
ML000165	MLST-160-RLGR-00-G34-N420	V2,V2: G 3/4" Pil,T,M: G 1/4"	① 350 bar @ 5 l/min (5000 psi @ 1.3 gpm) ② 7,5 bar C.P. (100 psi)	① 350-400 bar (5000-5800 psi) ② 3-15 bar (50-200 psi)	① 72 bar/turn (1000 psi/turn) ② 8 bar/turn (120 psi/turn)

EXCAVATORS VALVE

MLLT-250-RAUR

FLANGED TYPE
3/4" SAE 6000
WITH OIL RECOVERY



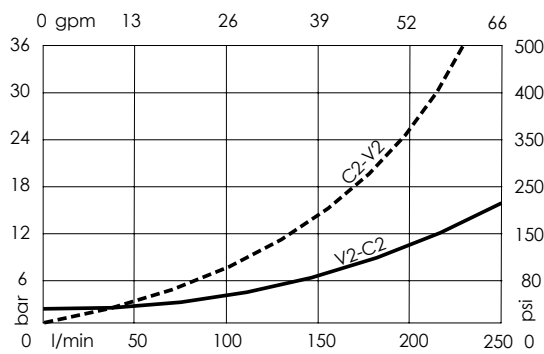
SPECIFICATIONS

Max. operating pressure:	420 bar (6000 psi)
Rated flow:	250 l/min (66 gpm)
Manifold:	Steel
Weight:	11,7 kg (25,7 lbs)
Contamination class to ISO 4406:	See technical spec.
MTF _d :	150 - 1200 years: See technical spec.

NOTES

When correctly adjusted for the specific excavator installation, these valves meet the requirement of ISO 8643.
For other configurations/quick codes not available in this catalogue page please consult factory

CURVES



ORDERING CODES

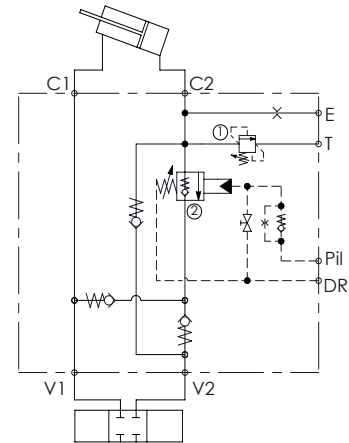
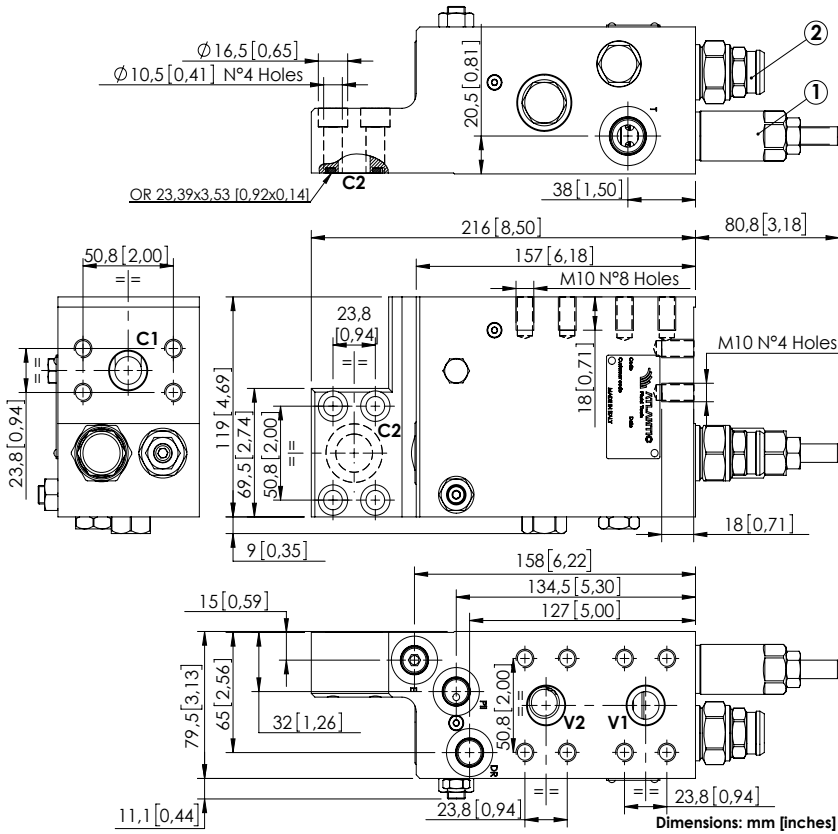
Quick code	Description	Ports	Standard setting Q=5 l/min (1,3 gpm)	Adjustment range	Pressure increase bar/turn (psi/turn)
ML000265	MLLT-250-RAUR-00-S34-N420	V2,V2,C1,C2: 3/4" SAE 6000 E,Pil,Dr: 9/16-18 UNF T: 3/4-16 UNF	① 395 bar @ 5 l/min (5700 psi @ 1,3 gpm) ② 7,9 bar C.P. (120 psi)	① 150-420 bar (2200-6000 psi) ② 3-15 bar (50-200 psi)	① 53 (700) ② 6 (90)

Revision A1

EXCAVATORS VALVE

MLLT-250-RAUL

FLANGED TYPE
3/4" SAE 6000
WITH OIL RECOVERY



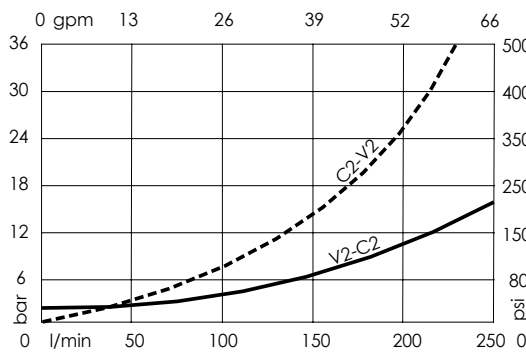
SPECIFICATIONS

Max. operating pressure:	420 bar (6000 psi)
Rated flow:	250 l/min (66 gpm)
Manifold:	Steel
Weight:	11,72 kg (25,7 lbs)
Contamination class to ISO 4406:	See technical spec.
MTF _d :	150 - 1200 years: See technical spec.

NOTES

When correctly adjusted for the specific excavator installation, these valves meet the requirement of ISO 8643.
For other configurations/quick codes not available in this catalogue page please consult factory

CURVES



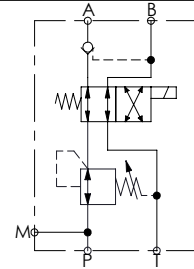
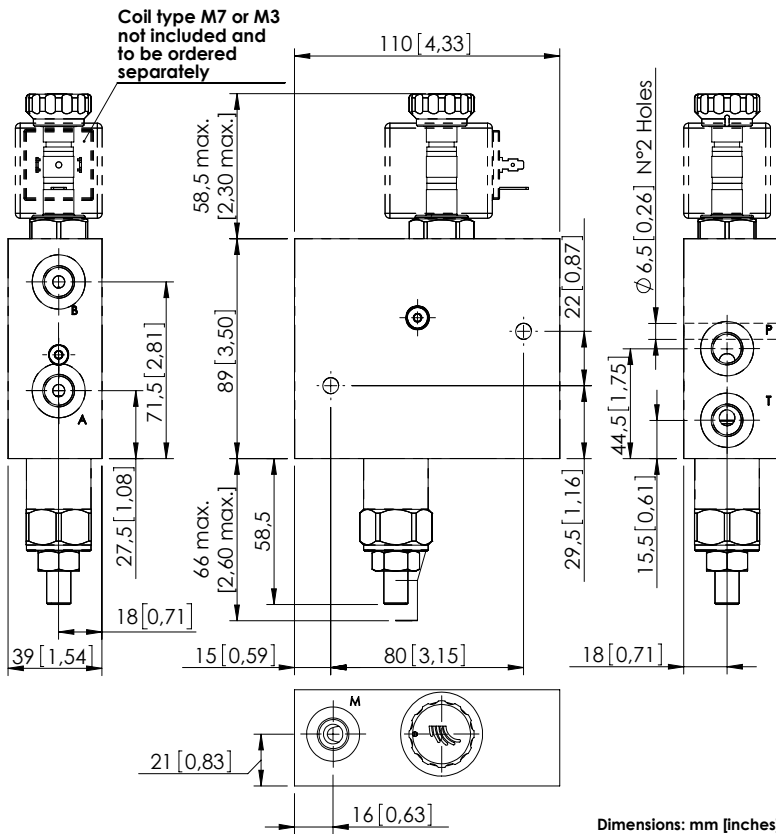
ORDERING CODES

Quick code	Description	Ports	Standard setting Q=5 l/min (1,3 gpm)	Adjustment range	Pressure increase bar/turn (psi/turn)
ML000266	MLLT-250-RAUL-00-S34-N420	V2,V2,C1,C2: 3/4" SAE 6000 E,Pil,Dr: 9/16-18 UNF T: 3/4-16 UNF	① 395 bar @ 5 l/min (5700 psi @ 1,3 gpm) ② 7,9 bar C.P. (120 psi)	① 150-420 bar (2200-6000 psi) ② 3-15 bar (50-200 psi)	① 53 (700) ② 6 (90)

EXCAVATORS VALVE

BDEF-010-ALRV

AUXILIARY QUICK HITCH



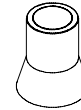
SPECIFICATIONS

Max. operating pressure:	380 bar (5500 psi)
Rated flow:	10 l/min (3 gpm)
Manifold:	Steel
Weight:	3 kg (6,8 lbs)
Coil type:	M7 or M3 type
Contamination class to ISO 4406:	See technical spec.
MTF _a :	150 - 1200 years: See technical spec.

NOTES

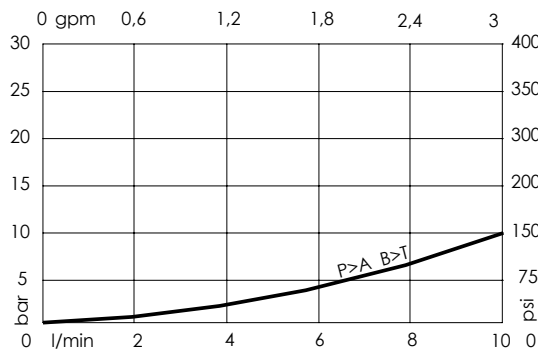
For other configurations/quick codes not available in this catalogue page please consult factory

SEALING CAP



Ordering code:
AT000022

CURVES



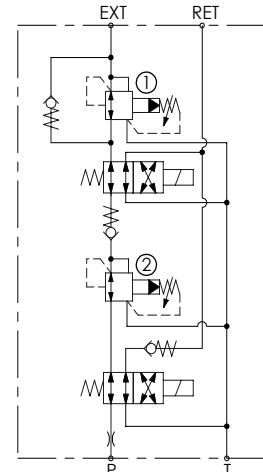
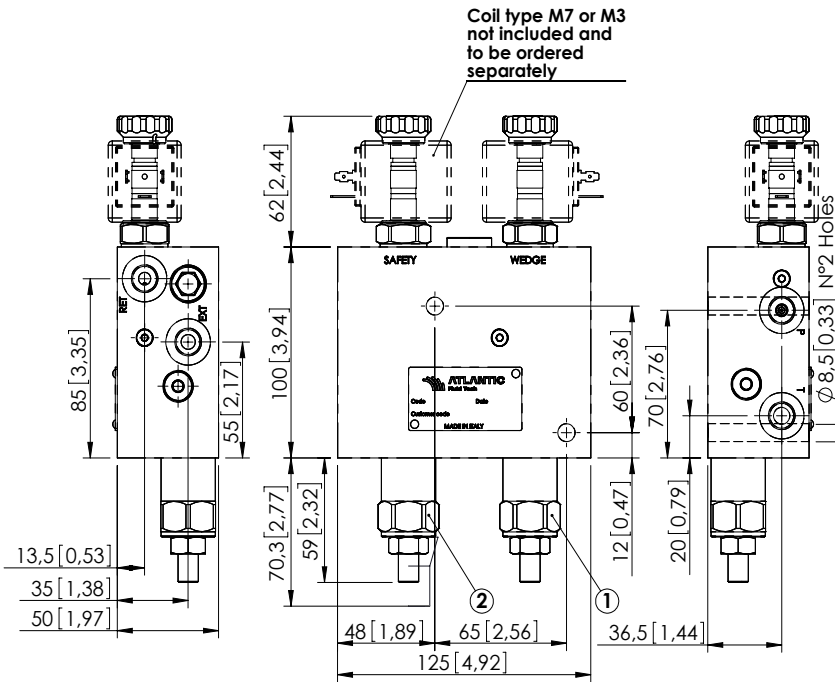
ORDERING CODES

Quick code	Description	Ports	Standard setting Q=5 l/min (1,3 gpm)	Adjustment range	Pressure increase
BD000095	BDEF-010-ALRV-NP-G14-V380	P,T,A,B,M: G 1/4"	340 bar (4900 psi)	70-350 bar (1000-5000 psi)	114 bar/turn (1600 psi/turn)

EXCAVATORS VALVE

BDEN-010-ALRU

AUXILIARY QUICK HITCH



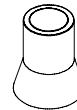
SPECIFICATIONS

Max. operating pressure:	350 bar (5000 psi)
Rated flow:	10 l/min (3 gpm)
Manifold:	Steel
Weight:	4,9 kg (10,8 lbs)
Coil type:	M7 or M3 type
Contamination class to ISO 4406:	See technical spec.
MTTFd:	150 - 1200 years: See technical spec.

NOTES

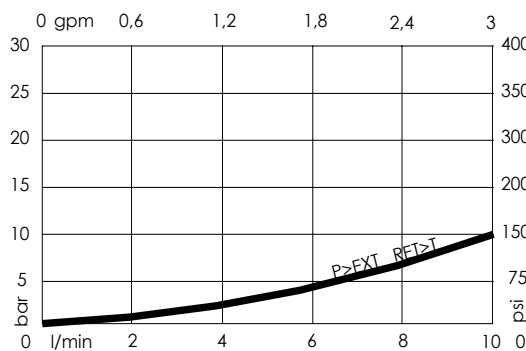
For other configurations/quick codes not available in this catalogue page please consult factory

SEALING CAP



Ordering code:
AT000022

CURVES



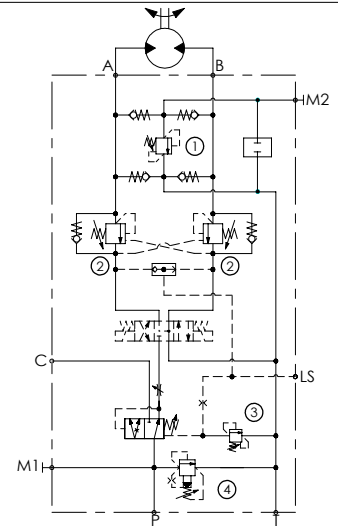
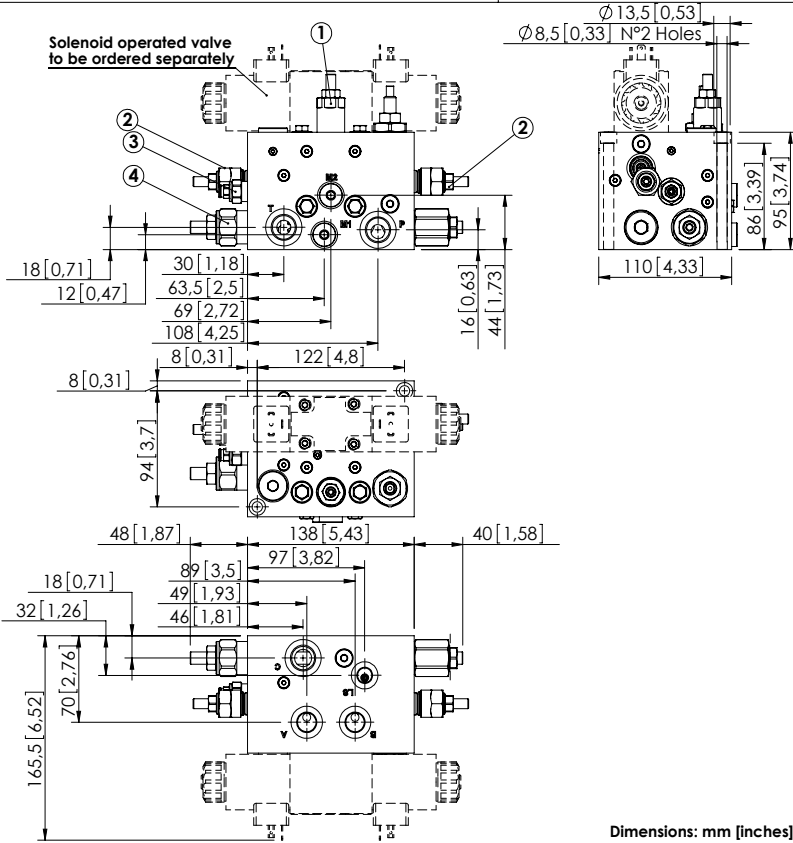
ORDERING CODES

Quick code	Description	Ports	Standard setting Q=5 l/min (1,3 gpm)	Adjustment range	Pressure increase
BD000207	BDEN-010-ALRU-NP-G14-N350	P,T,A,B,M: G 1/4"	①:120 bar (1700 psi) ②:240 bar (3500 psi)	70-350 bar (1000-5000 psi)	114 bar/turn (1600 psi/turn)

EXCAVATORS VALVE

BDTF-100-ALLC

EXCAVATOR ATTACHMENT
FUNCTION - G 1/2"



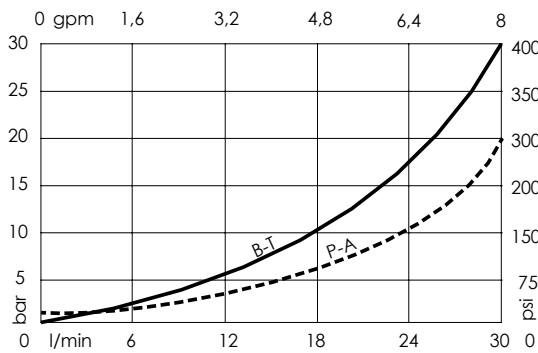
SPECIFICATIONS

Max. operating pressure:	350 bar (5000 psi)
Max. rated flow:	100 l/min (26 gpm)
Rated flow in A-B:	30 l/min (8 gpm)
Manifold:	Steel
Weight:	10,96 kg (24.2 lbs)
Contamination class to ISO 4406:	See technical spec.
MTF _a :	150 - 1200 years: See technical spec.

NOTES

Our spring on the compensator is adjustable from 5 to 15 bar (75-200 psi), the max flow in A and B depend on the Δp curve of the electrical valve.
For other configurations/quick codes not available in this catalogue page please consult factory

CURVES



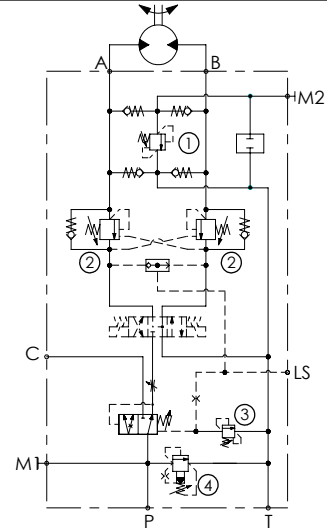
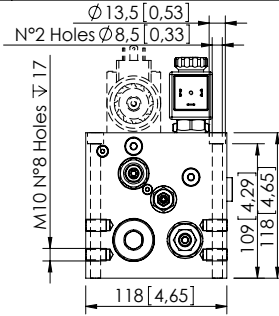
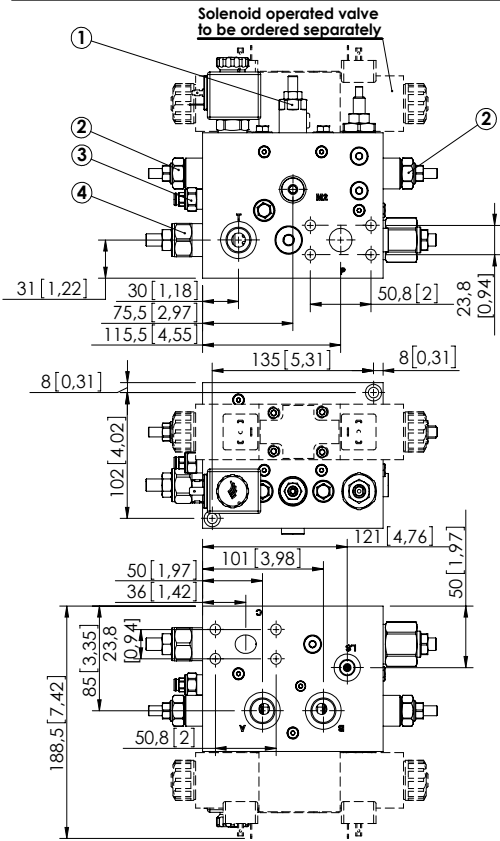
ORDERING CODES

Quick code	Description	Pilot ratio	Ports	Standard setting Q=5 l/min-bar (1.3 gpm-psi)	Adjustment range bar (psi)	Pressure increase bar/turn (psi/turn)
BD000081	BDTF-100-ALLC-04-G12-N350	4:1	P,T,C: G 1/2" A,B: G 3/8" M,LS: G 1/4"	①:220 (3200) ③:200 (2900) ②:260 (3700) ④:250 (3600)	①②:100-350 (1500-5000) ③:120-350 (1700-5000) ④:140-350 (2000-5000)	①:91 (1300) ③:165 (2400) ②:184 (2600) ④:114 (1600)

EXCAVATORS VALVE

BDTF-200-AFLC

EXCAVATOR ATTACHMENT
FUNCTION - 3/4" SAE 6000

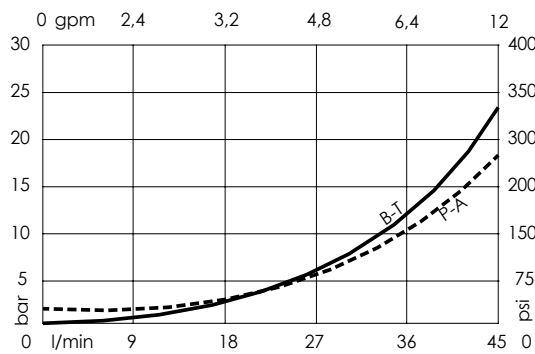


Dimensions: mm [inches]

NOTES

Our spring on the compensator is adjustable from 5 to 15 bar (75-200 psi), the max flow in A and B depend on the Δp curve of the electrical valve.
For other configurations/quick codes not available in this catalogue page please consult factory

CURVES



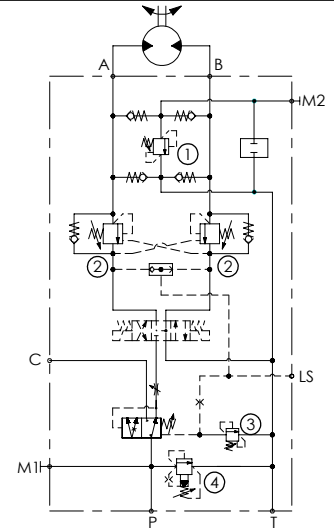
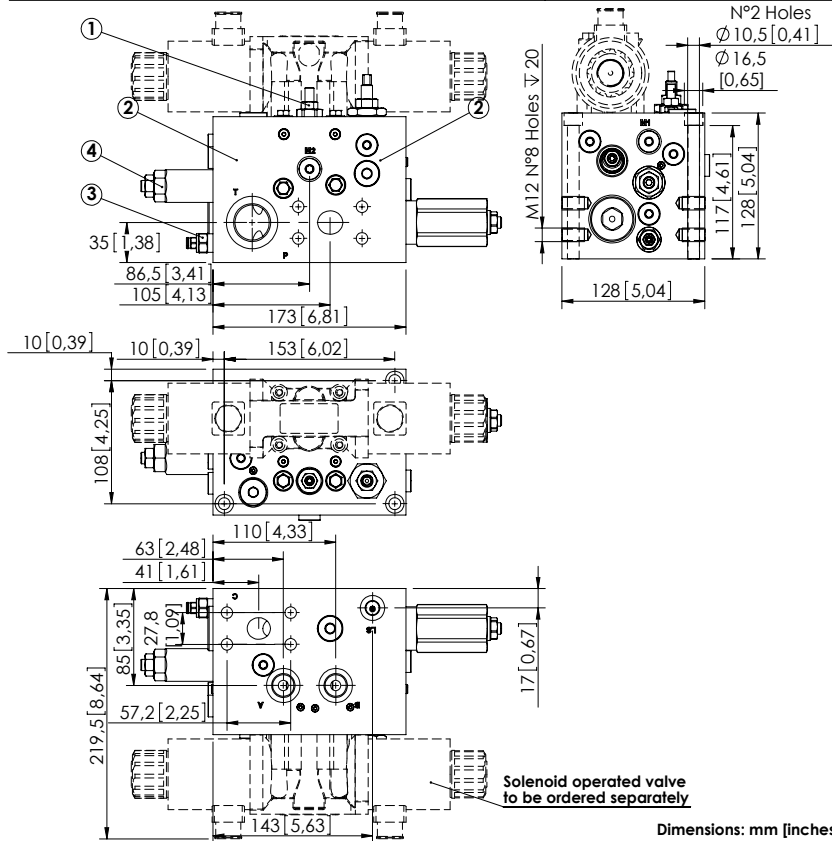
ORDERING CODES

Quick code	Description	Pilot ratio	Ports	Standard setting Q=5 l/min-bar (1,3 gpm-psi)	Adjustment range bar (psi)	Pressure increase bar/turn (psi/turn)
BD000082	BDTF-200-AFLC-04-S34-N350	4:1	P,C: 3/4" SAE 6000 A,B,T: G 3/4" M,LS: G 1/4"	①:220 (3200) ③:200 (2900) ②:260 (3700) ④:250 (3600)	①②:100-350 (1500-5000) ③:120-350 (1700-5000) ④:140-350 (2000-5000)	①:91 (1300) ③:165 (2400) ②:138 (2000) ④:114 (1600)

EXCAVATORS VALVE

BDTF-300-AFLC

EXCAVATOR ATTACHMENT
FUNCTION - 1" SAE 6000



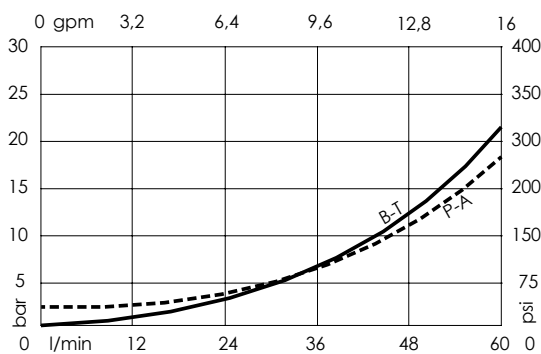
SPECIFICATIONS

Max. operating pressure:	350 bar (5000 psi)
Max. rated flow:	300 l/min (79 gpm)
Rated flow in A-B:	60 l/min (16 gpm)
Manifold:	Steel
Weight:	26,75 kg (58,9 lbs)
Contamination class to ISO 4406:	See technical spec.
MTF _a :	150 - 1200 years: See technical spec.

NOTES

Our spring on the compensator is adjustable from 5 to 15 bar (75-200 psi), the max flow in A and B depend on the Δp curve of the electrical valve.
For other configurations/quick codes not available in this catalogue page please consult factory

CURVES



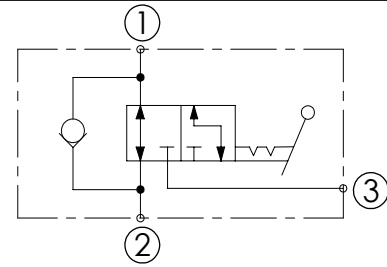
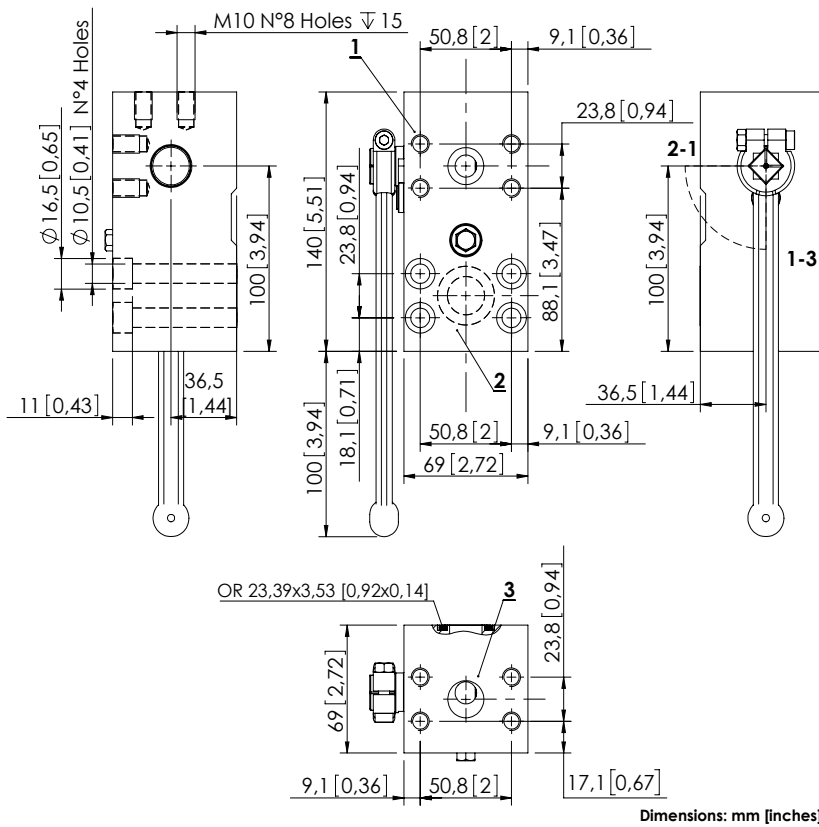
ORDERING CODES

Quick code	Description	Pilot ratio	Ports	Standard setting Q=5 l/min-bar (1,3 gpm-psi)	Adjustment range bar (psi)	Pressure increase bar/turn (psi/turn)
BD000083	BDTF-300-AFLC-04-S01-N350	4:1	P,C: 1" SAE 6000 A,B,T: G 1/2" M,LS: G 1/4"	①:220 (3200) ③:200 (2900) ②:260 (3700) ④:250 (3600)	①②:100-350 (1500-5000) ③:120-350 (1700-5000) ④:140-270 (2000-3900)	①:91 (1300) ③:165 (2400) ②:138 (2000) ④:49 (700)

EXCAVATORS VALVE

MDRC-200-SLVN

AUXILIARY
SELECTOR VALVE



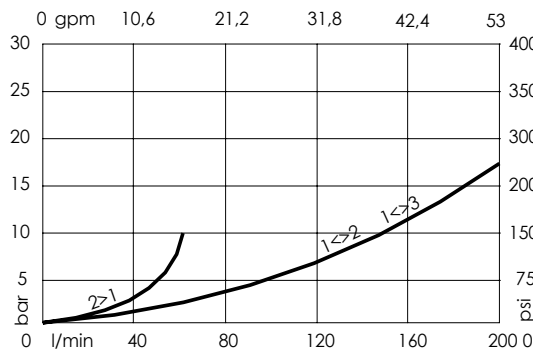
SPECIFICATIONS

Max. operating pressure:	500 bar (7200 psi)
Rated flow:	200 l/min (53 gpm)
Weight:	4,86 kg (10,7 lbs)
Manifold:	Steel
Contamination class to ISO 4406:	See technical spec.
MTF _d :	150 - 1200 years: See technical spec.

NOTES

1 to 2, leakage in 3: 20 cm³ @ 100 bar (1,22 in³ @ 1500 psi)
 1 to 3, leakage in 2: 20 cm³ @ 100 bar (1,22 in³ @ 1500 psi)
 Oil specification: 46 cSt
 Oil temperature: 35°C (1,66 °F)
 Handle supplied separately, not attached to the block.
 For other configurations/quick codes not available in this catalogue page please consult factory

CURVES



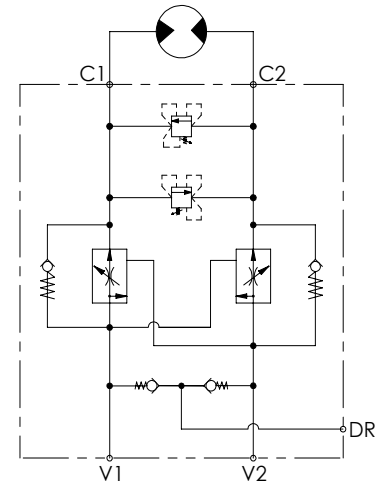
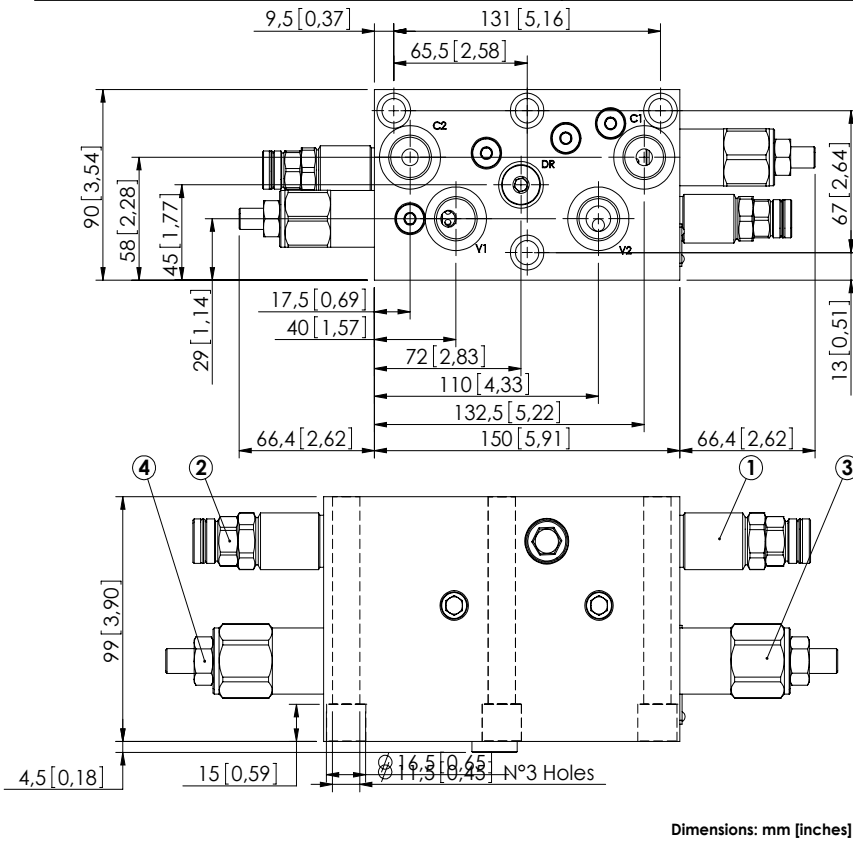
ORDERING CODES

Quick code	Description	Ports
MD000072	MDRC-200-SLVN-NP-S34-N500	1,2,3: 3/4" SAE 6000

EXCAVATORS VALVE

BPTD-060-ALOU

FLOW REGULATOR
WITH RELIEF VALVE



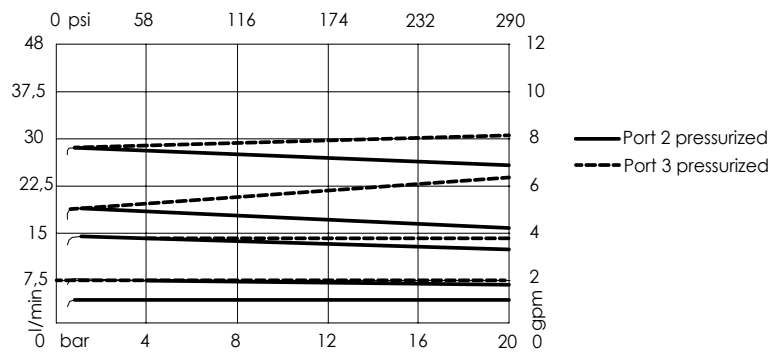
SPECIFICATIONS

Max. operating pressure:	350 bar (5000 psi)
Rated flow:	60 l/min (16 gpm)
Regulated flow:	30 l/min (8 gpm)
Manifold:	Steel
Weight:	9,79 kg (21,5 lbs)
Contamination class to ISO 4406:	See technical spec.
MTF _a :	150 - 1200 years: See technical spec.

NOTES

For other configurations/quick codes not available in this catalogue page please consult factory

CURVES



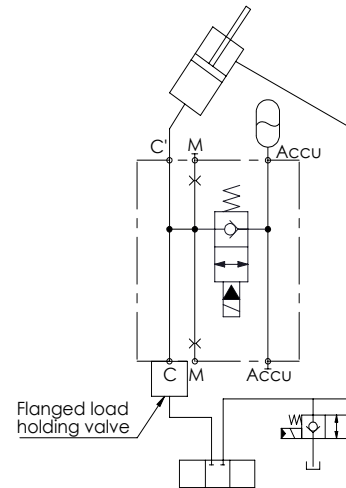
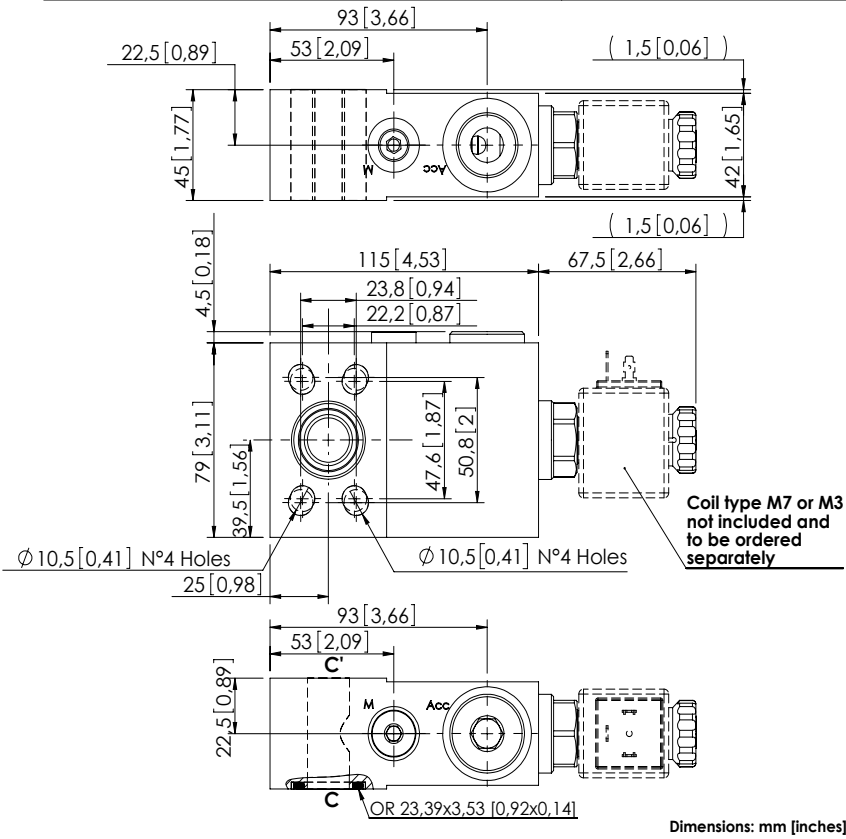
ORDERING CODES

Quick code	Description	Ports	Standard setting Q=5 l/min (1,3 gpm)	Adjustment range	Pressure increase
BP000039	BPTD-060-ALOU-NP-G12-N350	V1,V2,C1,C2: G 1/2" DR: G 1/4"	90 bar (1300 psi)	30-100 bar (400-1500 psi)	20 bar/turn (300 psi/turn)

EXCAVATORS VALVE

BDEN-070-AFEJ

SOLENOID ACTIVATED
FLANGED



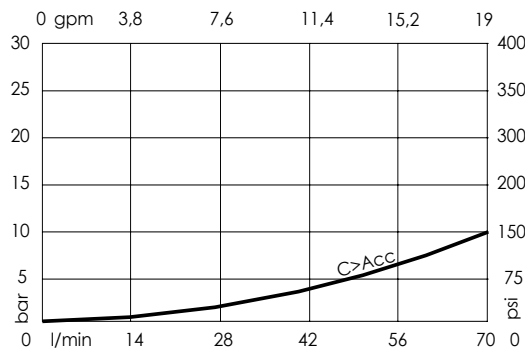
SPECIFICATIONS

Max. operating pressure:	420 bar (6000 psi)
Rated flow:	70 l/min (19 gpm)
Weight:	2,97 kg (6,5 lbs)
Manifold:	Steel
Coil type:	M7 or M3 type
Contamination class to ISO 4406:	See technical spec.
MTFda:	150 - 1200 years: See technical spec.

NOTES

For other configurations/quick codes not available in this catalogue page please consult factory

CURVES



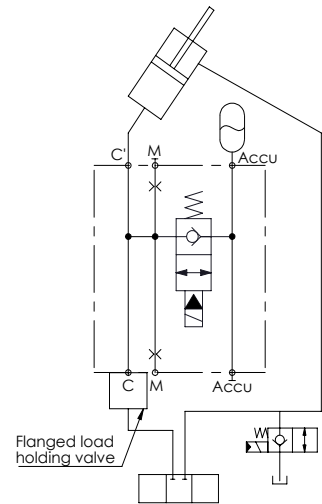
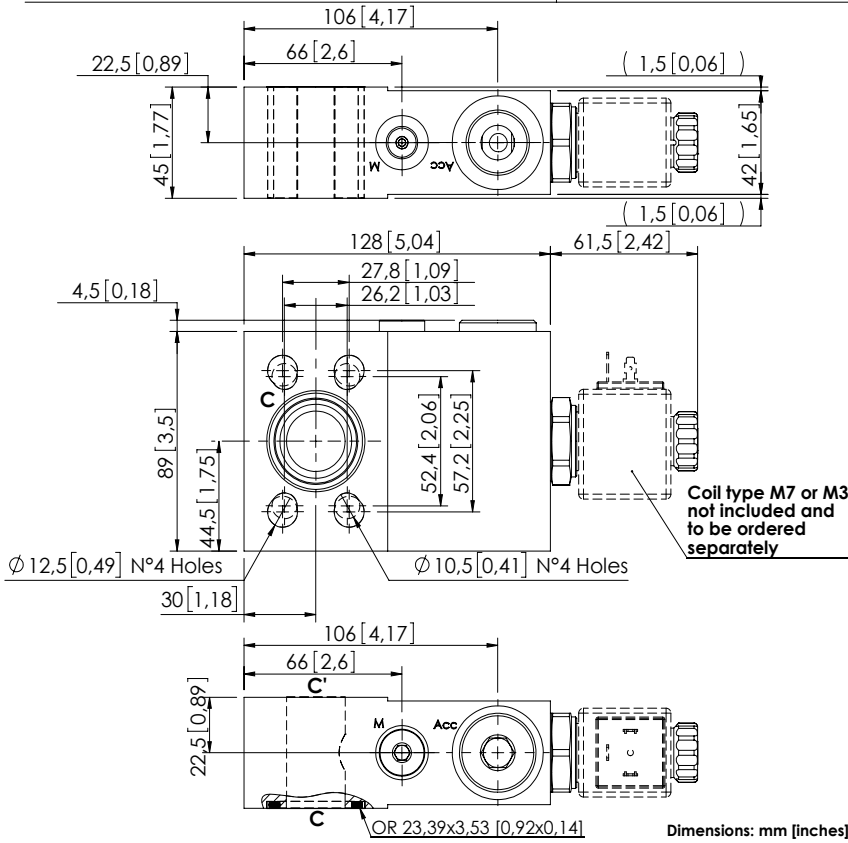
ORDERING CODES

Quick code	Description	Ports
BD000065	BDEN-070-AFEJ-NP-S34-N350	C,C': 3/4" SAE 3000/6000 Acc: G 3/4" M: G 1/4"

EXCAVATORS VALVE

BDEN-070-AFEJ

SOLENOID ACTIVATED
FLANGED



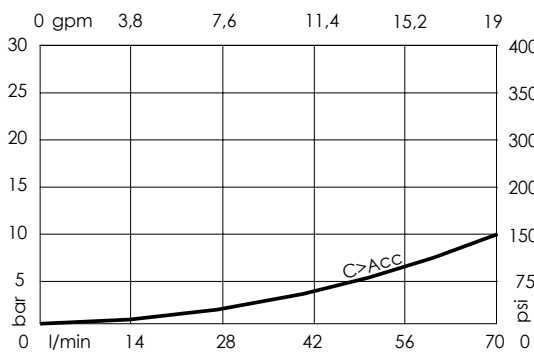
SPECIFICATIONS

Max. operating pressure:	420 bar (6000 psi)
Rated flow:	70 l/min (19 gpm)
Weight:	3,53 kg (7,78 lbs)
Manifold:	Steel
Coil type:	M7 or M3 type
Contamination class to ISO 4406:	See technical spec.
MTF _d :	150 - 1200 years: See technical spec.

NOTES

For other configurations/quick codes not available in this catalogue page please consult factory

CURVES



ORDERING CODES

Quick code	Description	Ports
BD000066	BDEN-070-AFEJ-NP-S10-N350	C, C': 1" SAE 3000/6000 Acc: G 3/4" M: G 1/4"

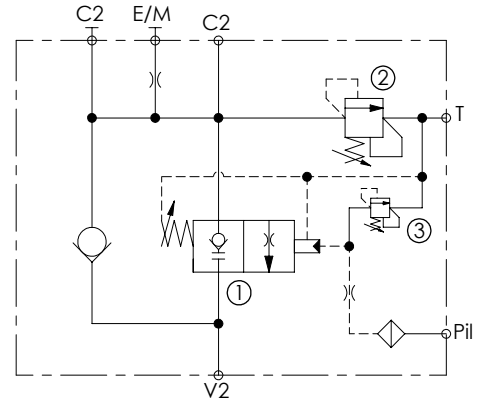
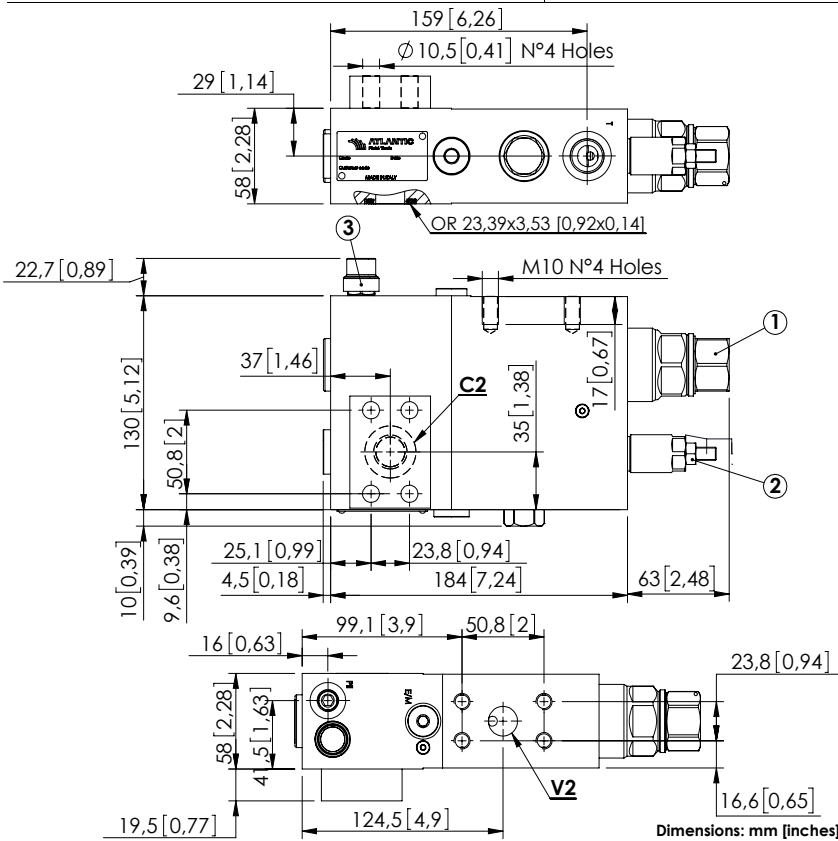
APPLICATIONS - ALL TERRAIN CRANES



Hydraulic scheme	Valve description	Valve type	Rated flow l/min (gpm)	Max. pressure bar (psi)	Installation	Main port size or cavity type	Page
	<p>MLST-250-AAGN</p>	<p>-</p>	<p>250 (66)</p>	<p>350 (5000)</p>	<p>In line</p>	<p>3/4" SAE 6000</p>	<p>20.210</p>

EXCAVATORS VALVE

MLST-250-AAGN



SPECIFICATIONS

Max. operating pressure:	350 bar (5000 psi)
Rated flow:	250 l/min (66 gpm)
Manifold:	Steel
Weight:	10,56 kg (23,3 lbs)
Contamination class to ISO 4406:	See technical spec.
MTTF:	150 - 1200 years: See technical spec.

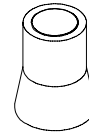
NOTES

When correctly adjusted for the specific excavator installation, these valves meet the requirement of ISO 8643.

Piston with grooves.

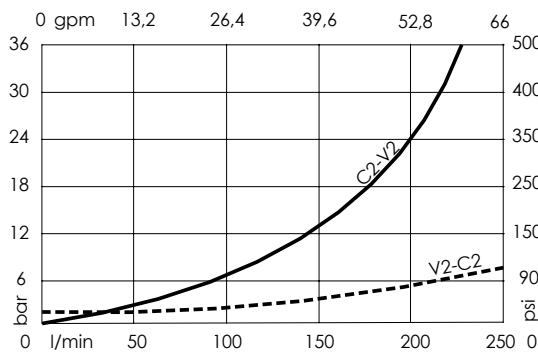
For other configurations/quick codes not available in this catalogue page please consult factory

SEALING CAP



Ordering code:
AT000020

CURVES



ORDERING CODES

Quick code	Description	Ports	Standard setting Q=5 l/min (1.3 gpm)	Adjustment range	Pressure increase bar/turn (psi/turn)
ML000212	MLST-250-AAGN-00-S34-N350	V2,C2: 3/4" SAE 6000 Pii,E/M: G 1/4" T: G 1/2"	① 9 bar (130 psi) ② 350 bar (5000 psi) ③ 20 bar C.P. (100 psi)	① 2-15 bar (30-200 psi) ② 100-350 bar (1500-5000 psi) ③ 10-40 bar (150-600 psi)	① 1,6 (20) ② 91 bar (1300) ③ 22 bar (300)

APPLICATIONS - CONCRETE PUMP CRANES

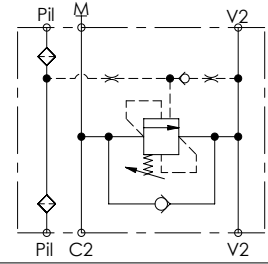
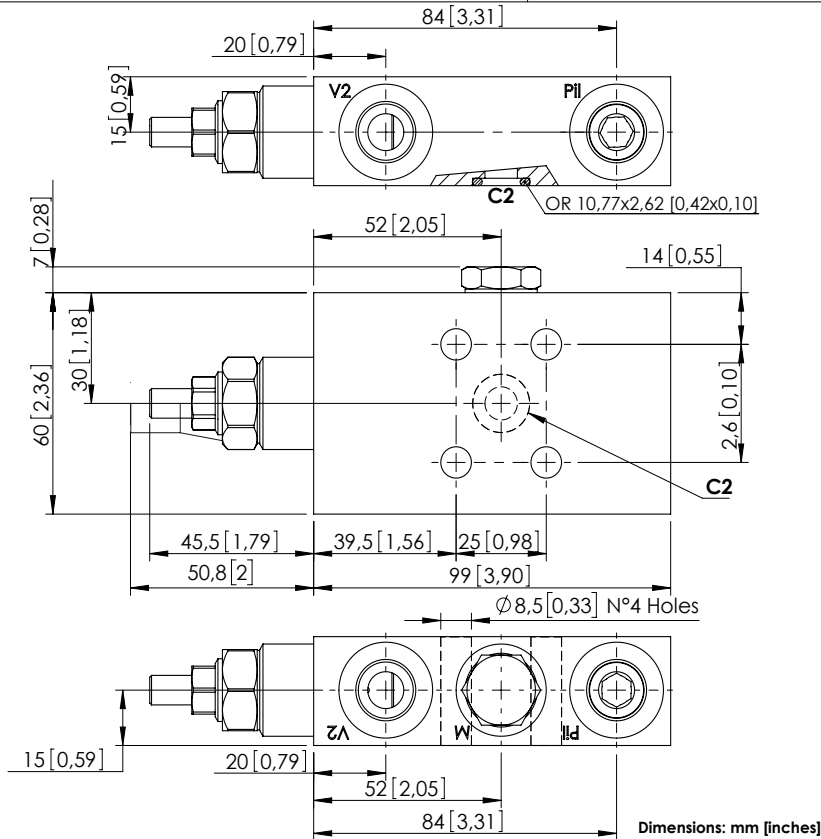


Hydraulic scheme	Valve description	Valve type	Rated flow l/min (gpm)	Max. pressure bar (psi)	Installation	Main port size or cavity type	Page
	MBSN-060-ZAPF	-	60 (16)	350 (5000)	Flanged	G 3/8"	20.310
	MBSN-060-AAST	-	60 (16)	350 (5000)	Flanged	Ø9	20.320
	MBSN-060-AASA	-	60 (16)	500 (7200)	Flanged	Ø9	20.330
	MBSN-060-APST	-	60 (16)	420 (6000)	Flanged	M22x1,5	20.340
	MBSN-080-APST	-	80 (21)	500 (7200)	Flanged	M22x1,5	20.350
	MBSN-060-ZENV	-	60 (16)	500 (7200)	Flanged	Ø9	20.360

CONCRETE PUMP CRANES

MBSN-060-ZAPF

SINGLE ACTING
FLANGED



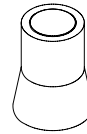
SPECIFICATIONS

Max. operating pressure:	350 bar (5000 psi)
Rated flow:	60 l/min (16 gpm)
Manifold:	Steel
Weight:	0,56 kg (1,23 lbs)
Contamination class to ISO 4406:	See technical spec.
MTF _a :	150 - 1200 years: See technical spec.

NOTES

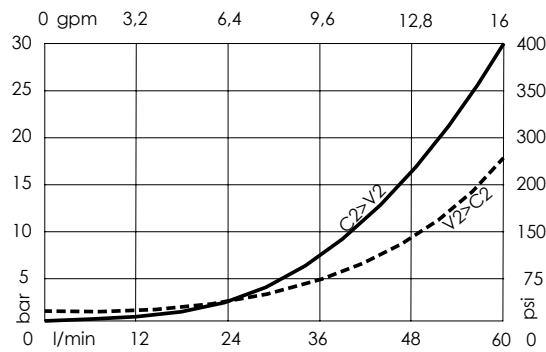
- Setting: at least 1.3 times the load induced pressure.
- Operative pilot ratio: 2:1
- For other configurations/quick codes not available in this catalogue page please consult factory

SEALING CAP



Ordering code:
AT000020

CURVES

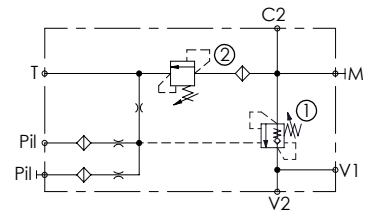
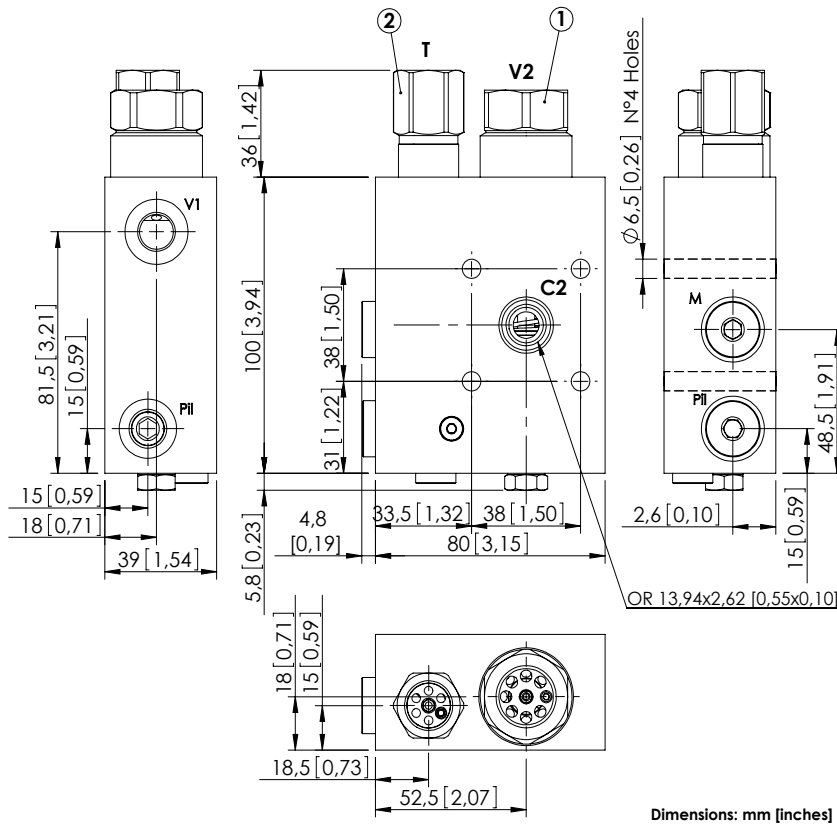


ORDERING CODES

Quick code	Description	Pilot ratio	Ports	Standard setting Q=5 l/min (1,3 gpm)	Adjustment range	Pressure increase
MB000461	MBSN-060-ZAPF-02-G38-N350	4:1	V2, Pil: G 3/8" M: M12x1,5 C2: Ø9	340 bar (4900 psi)	100-350 bar (1500-5000 psi)	138 bar/turn (2000 psi/turn)

CONCRETE PUMP CRANES

MBSN-060-AAST



SPECIFICATIONS

Max. operating pressure:	500 bar (7200 psi)
Rated flow:	60 l/min (16 gpm)
Manifold:	Steel
Weight:	2.42 kg (5.3 lbs)
Contamination class to ISO 4406:	See technical spec.
MTF _d :	150 - 1200 years: See technical spec.

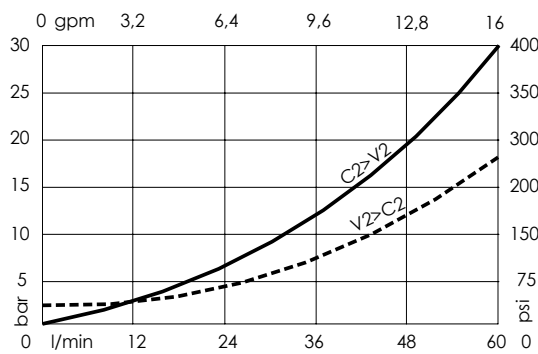
NOTES

Setting: at least 1.3 times the load induced pressure.

Operative pilot ratio: 3.6:1

For other configurations/quick codes not available in this catalogue page please consult factory

CURVES

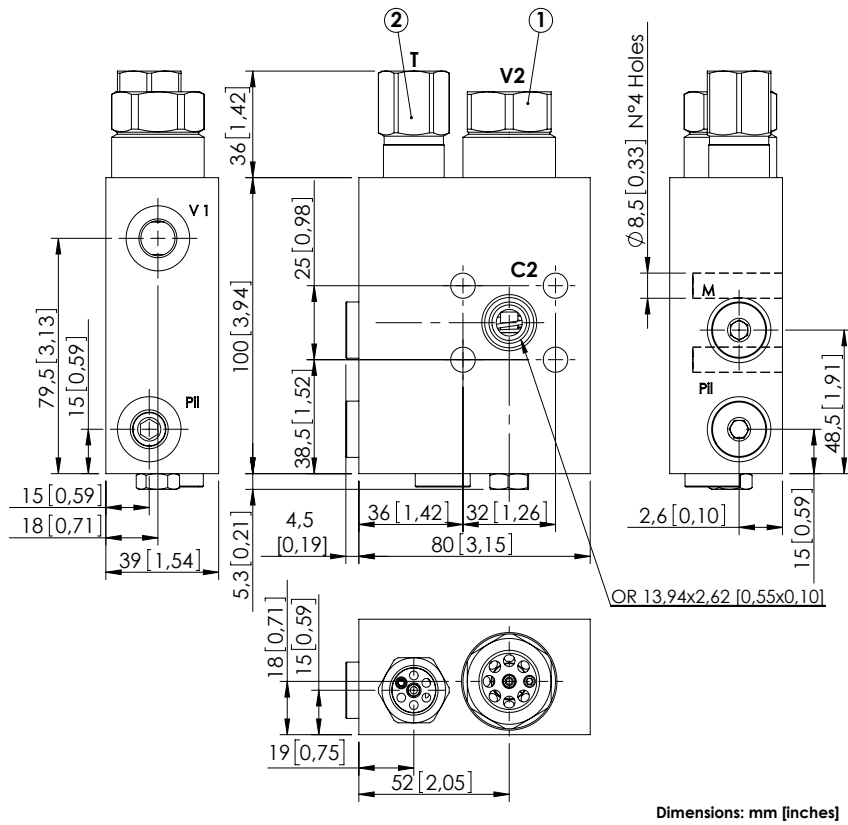


ORDERING CODES

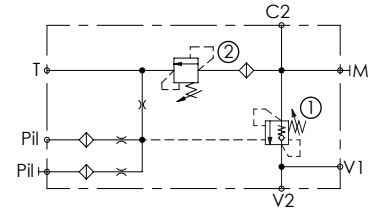
Quick code	Description	Pilot ratio	Ports	Standard setting Q=5 l/min (1.3 gpm)	Adjustment range	Pressure increase bar/turn (psi/turn)
MB000101	MBSN-060-AAST-07-G12-N500	7:1	V1, Pil, M: G 1/4" C2: Ø9 T: G3/8" V2: G1/2"	① 450 bar (6500 psi) ② 450 bar (6500 psi)	① 200-450 bar (2900-6500 psi) ② 250-450 bar (3600-6500 psi)	① 366 (5300) ② 167 (2400)

CONCRETE PUMP CRANES

MBSN-060-AASV



Dimensions: mm [inches]



SPECIFICATIONS

Max. operating pressure:	500 bar (7200 psi)
Rated flow:	60 l/min (16 gpm)
Manifold:	Steel
Weight:	2.38 kg (5.3 lbs)
Contamination class to ISO 4406:	See technical spec.
MTF _a :	150 - 1200 years: See technical spec.

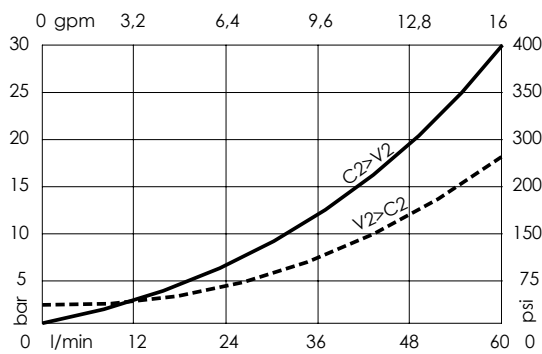
NOTES

Setting: at least 1.3 times the load induced pressure.

Operative pilot ratio: 2.5:1

For other configurations/quick codes not available in this catalogue page please consult factory

CURVES



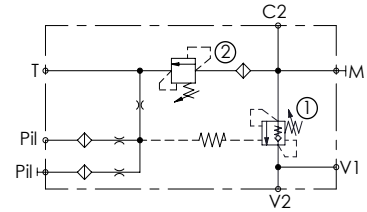
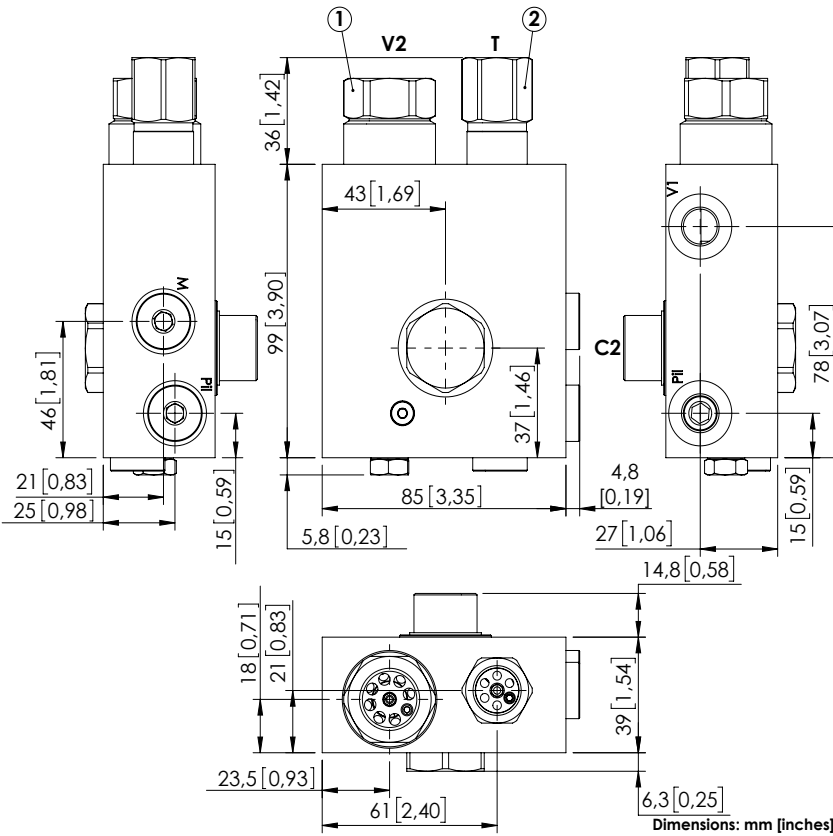
ORDERING CODES

Quick code	Description	Pilot ratio	Ports	Standard setting Q=5 l/min (1.3 gpm)	Adjustment range	Pressure increase bar/turn (psi/turn)
MB000088	MBSN-060-AASV-02-G12-N500	7:1	V1, P11: G 1/4" C2: Ø9 T: G3/8" V2: G1/2" M: G 1/8"	① 420 bar (6000 psi) ② 280 bar (4000 psi)	① 200-450 bar (2900-6500 psi) ② 100-450 bar (1500-6500 psi)	① 366 (5300) ② 102 (1500)

Revision B

CONCRETE PUMP CRANES

MBSN-060-APST



SPECIFICATIONS

Max. operating pressure:	420 bar (6000 psi)
Rated flow:	60 l/min (16 gpm)
Manifold:	Steel
Weight:	2.61 kg (5.7 lbs)
Contamination class to ISO 4406:	See technical spec.
MTTF _d :	150 - 1200 years: See technical spec.

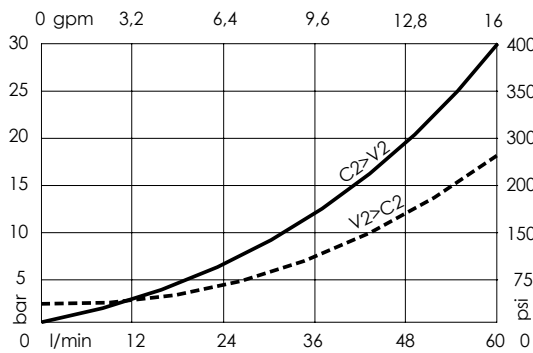
NOTES

Setting: at least 1.3 times the load induced pressure.

Pilot ratio: 7:1

For other configurations/quick codes not available in this catalogue page please consult factory

CURVES

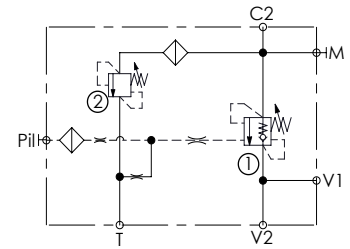
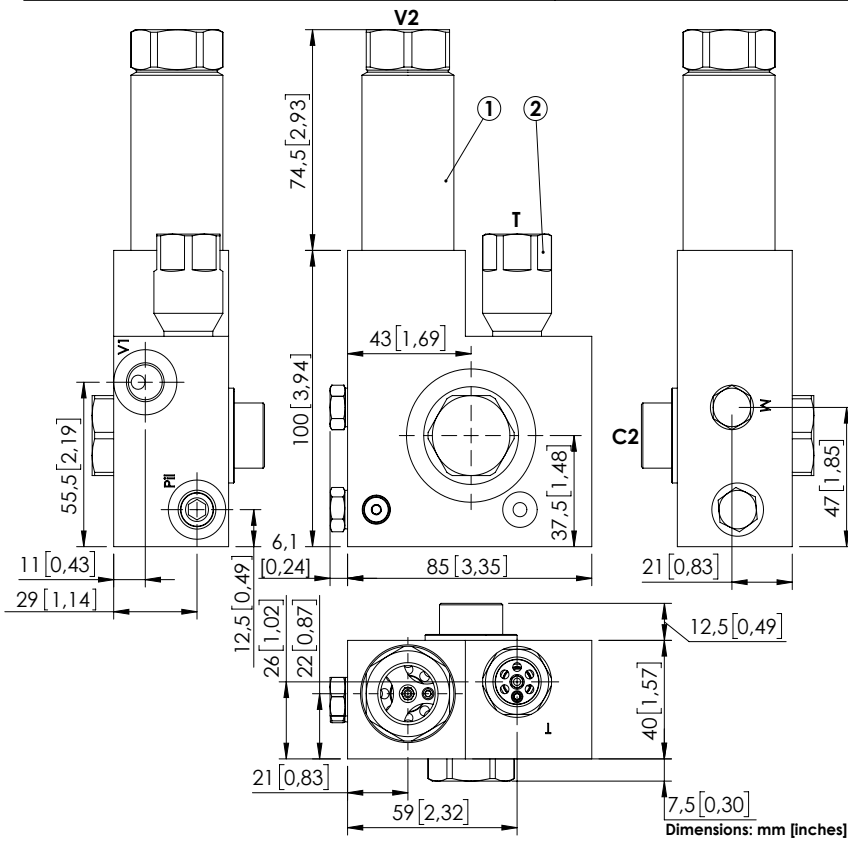


ORDERING CODES

Quick code	Description	Oper. pilot ratio	Ports	Standard setting Q=5 l/min (1.3 gpm)	Adjustment range	Pressure increase bar/turn (psi/turn)
MB000823	MBSN-060-APST-01-M22-N420	1,5:1	V1,Pil,M: G 1/4" V2: G 1/2" T: G3/8" C2: M22x1,5	① 380 bar (5500 psi) ② 400 bar (5800 psi)	① 200-420 bar (2900-6000 psi) ② 250-450 bar (3600-6500 psi)	① 366 (5300) ② 167 (2400)
MB000824	MBSN-060-APST-02-M22-N420	2,3:1	V1,Pil,M: G 1/4" V2: G 1/2" T: G3/8" C2: M22x1,5	① 210 bar (3000 psi) ② 230 bar (3300 psi)	① 200-420 bar (2900-6000 psi) ② 250-450 bar (3600-6500 psi)	① 366 (5300) ② 167 (2400)

CONCRETE PUMP CRANES

MBSN-080-APST



SPECIFICATIONS

Max. operating pressure:	500 bar (7200 psi)
Rated flow:	80 l/min (21 gpm)
Manifold:	Steel
Weight:	2.50 kg (5.3 lbs)
Contamination class to ISO 4406:	See technical spec.
MTTFa:	150 - 1200 years: See technical spec.

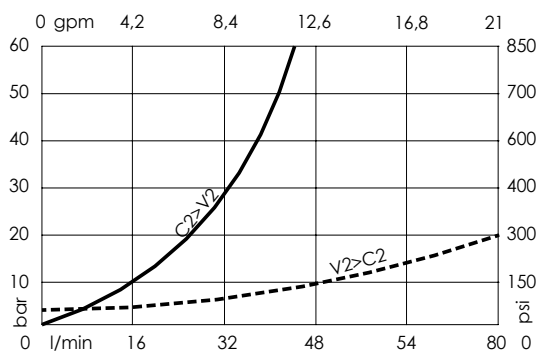
NOTES

Setting: at least 1.3 times the load induced pressure.

Operative pilot ratio: 2,3:1

For other configurations/quick codes not available in this catalogue page please consult factory

CURVES



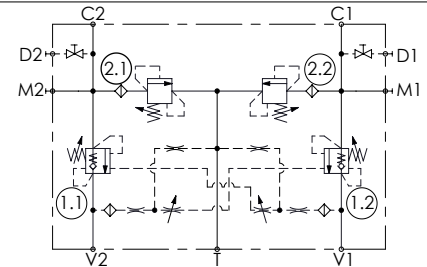
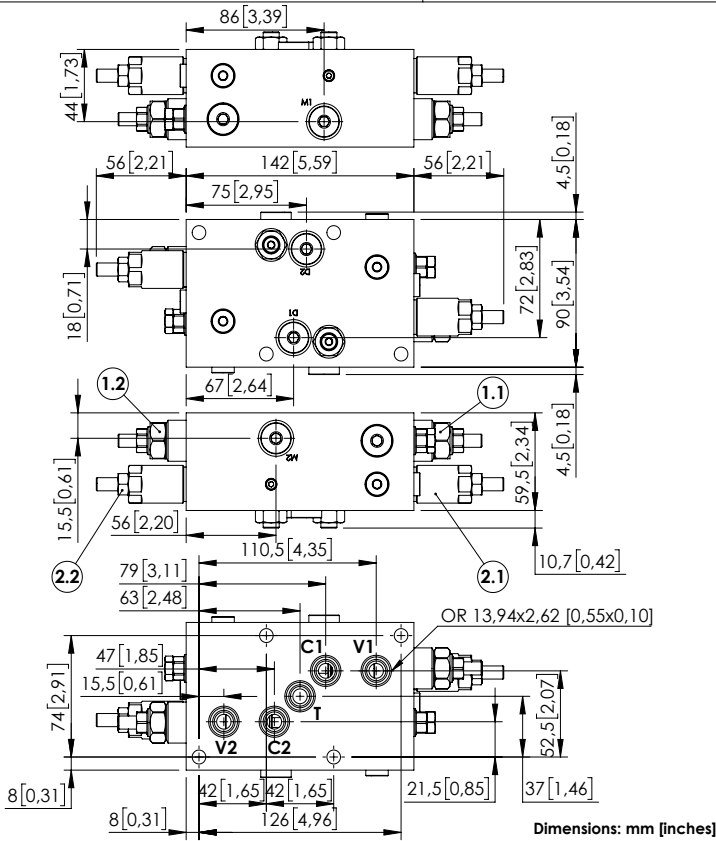
ORDERING CODES

Quick code	Description	Pilot ratio	Ports	Standard setting Q=5 l/min (1.3 gpm)	Adjustment range	Pressure increase bar/turn (psi/turn)
MB000913	MBSN-080-APST-02-M22-N500	7:1	V1, Pil: G 1/4" V2: G 1/2" T: G3/8" C2: M22x1,5 M: M8x1	① 380 bar (5500 psi) ② 400 bar (5800 psi)	① 200-450 bar (2900-6500 psi) ② 250-450 bar (3600-6500 psi)	① 366 (5300) ② 195 (2800)

Revision C

CONCRETE PUMP CRANES

MBSN-060-ZENV



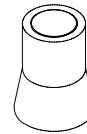
SPECIFICATIONS

Max. operating pressure:	500 bar (7200 psi)
Rated flow:	60 l/min (16 gpm)
Manifold:	Steel
Weight:	2.63 kg (5.7 lbs)
Contamination class to ISO 4406:	See technical spec.
MTF _a :	150 - 1200 years: See technical spec.

NOTES

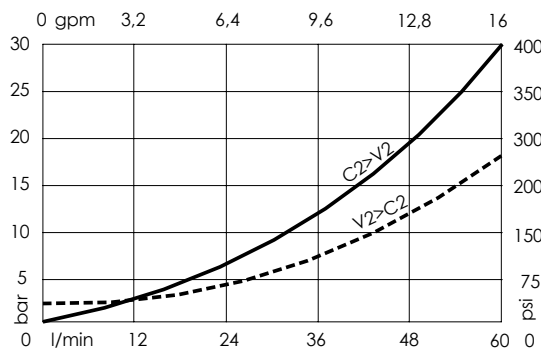
Setting: at least 1.3 times the load induced pressure.
 For other configurations/quick codes not available in this catalogue page please consult factory

SEALING CAP



Ordering code:
AT000020

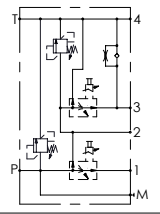
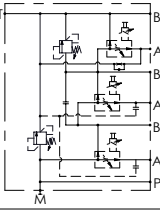
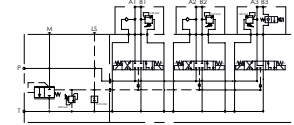
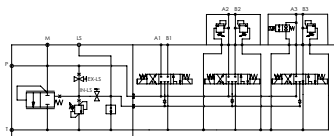
CURVES



ORDERING CODES

Quick code	Description	Pilot ratio	Ports	Standard setting Q=5 l/min (1.3 gpm)	Adjustment range	Pressure increase bar/turn (psi/turn)
MB000931	MBDN-060-ZENV-04-TPF-N500	4:1	C1,C2,V1,V2,T: Ø9 M1,M2: G 1/4"	① 400 bar (5800 psi) ② 390 bar (5600 psi)	① 200-420 bar (2900-6000 psi) ② 100-350 bar (1500-5000 psi)	① 150 (2200) ② 106 (1500)

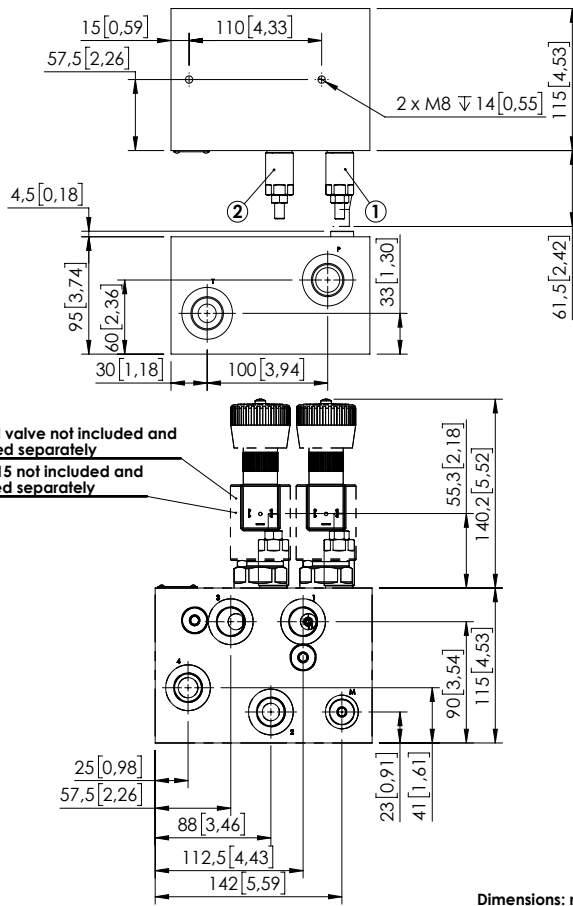
APPLICATIONS - SALT SPRAYERS

Hydraulic scheme	Valve description	Valve type	Rated flow l/min (gpm)	Max. pressure bar (psi)	Installation	Main port size or cavity type	Page
	BFRM-140-LLLO-02	Proportional valve	140 (37)	250 (3600)	In line	M26x1,5	20.410
	BFRM-140-LLLO-03	Proportional valve	140 (37)	250 (3600)	In line	M27x1,5	20.420
		Directional valve	40 (11)	210 (3000)	In line	G 3/8"	20.430
		Directional valve	40 (11)	210 (3000)	In line	G 3/8"	20.440

SALT SPRAYER VALVE

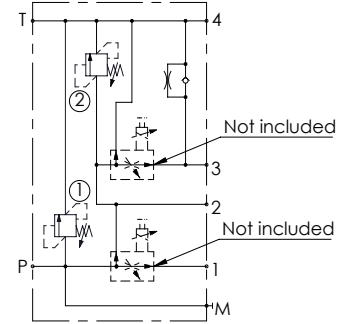
BFRM-140-LLLO

PROPORTIONAL VALVE



Proportional valve not included and to be ordered separately
Coil type M15 not included and to be ordered separately

Dimensions: mm [inches]



SPECIFICATIONS

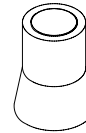
Max. operating pressure:	250 bar (3600 psi)
Rated flow:	140 l/min (37 gpm)
Max. regulated flow:	0-80 l/min (0-21 gpm)
Manifold:	Aluminium
Weight:	4.4 kg (9,7 lbs)
Coil type:	M15
Cavity type:	SAE-16-3N
Contamination class to ISO 4406:	See technical spec.
MTF _d :	150 - 1200 years: See technical spec.

NOTES

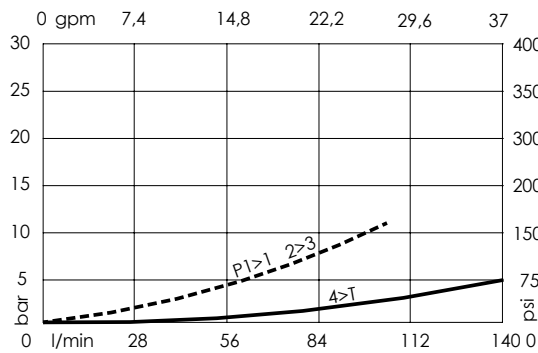
See chapter 21.00.000 for coils info.
See chapter 16.00.000 for proportional valves info.
For other configurations/quick codes not available in this catalogue page please consult factory

SEALING CAP

Ordering code:
AT000020



CURVES



ORDERING CODES

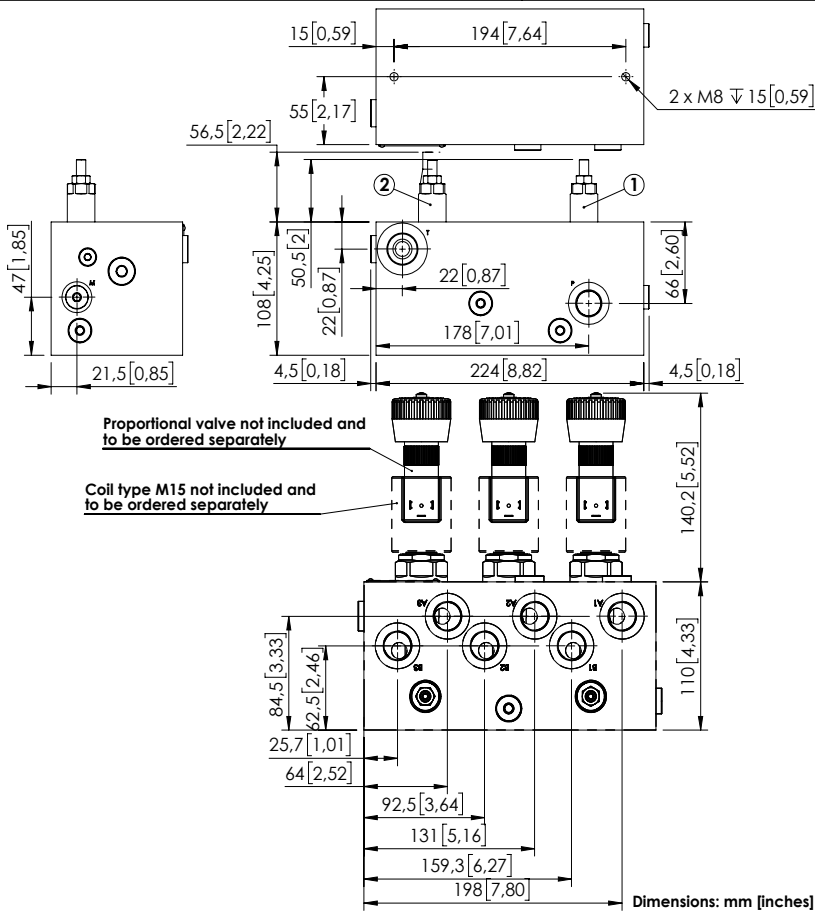
Quick code	Description	Ports	Standard setting Q=5 l/min (1,3 gpm)	Adjustment range	Pressure increase bar/turn (psi/turn)
BF000020	BFRM-140-LLLO-02-M27-N250	1,2,3,4: M22x1,5 P,T: M27x2 M: M14x1,5	① 200 bar (2900 psi) ② 100 bar (1500 psi)	① 50-210 bar (700-3000 psi) ② 30-100 bar (400-1500 psi)	① 42 (600) ② 22 (300)

Revision B

SALT SPRAYER VALVE

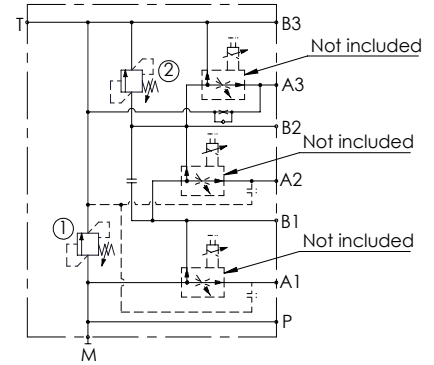
BFRM-140-LLLO

PROPORTIONAL VALVE



Proportional valve not included and to be ordered separately
 Coil type M15 not included and to be ordered separately

Dimensions: mm [inches]



SPECIFICATIONS

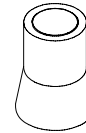
Max. operating pressure:	250 bar (3600 psi)
Rated flow:	140 l/min (37 gpm)
Max. regulated flow:	0-80 l/min (0-21 gpm)
Manifold:	Aluminium
Weight:	6,4 kg (14,1 lbs)
Coil type:	M15
Cavity type:	SAE-16-3N
Contamination class to ISO 4406:	See technical spec.
MTTF _d :	150 - 1200 years: See technical spec.

NOTES

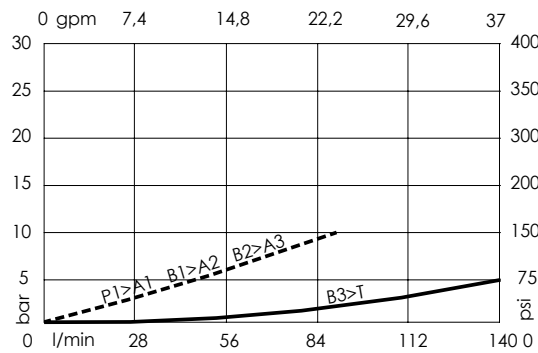
See chapter 21.00.000 for coils info.
 See chapter 16.00.000 for proportional valves info.
 For other configurations/quick codes not available in this catalogue page please consult factory

SEALING CAP

Ordering code:
AT000020



CURVES



ORDERING CODES

Quick code	Description	Ports	Standard setting Q=5 l/min (1,3 gpm)	Adjustment range	Pressure increase bar/turn (psi/turn)
BF000019	BFRM-140-LLLO-03-M26-N250	A, B, P: M22x1,5 T: M26x2 M: M14x1,5	① 200 bar (2900 psi) ② 100 bar (1500 psi)	① 50-210 bar (700-3000 psi) ② 30-100 bar (400-1500 psi)	① 42 (600) ② 22 (300)

Revision A1

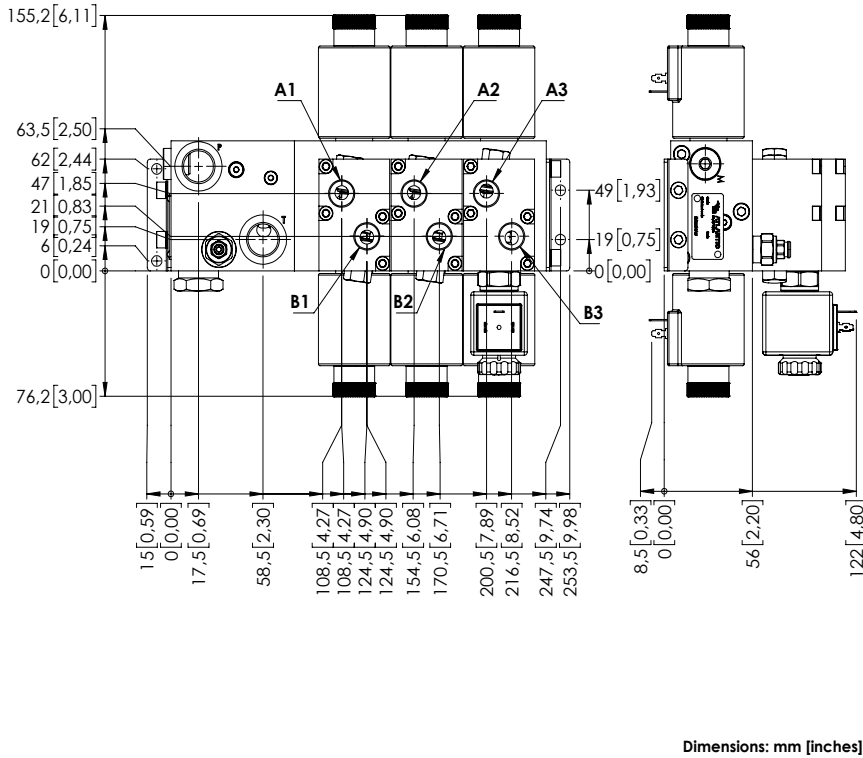
SALT SPRAYER VALVE

EBLE-040-CCSM



SPECIFICATIONS

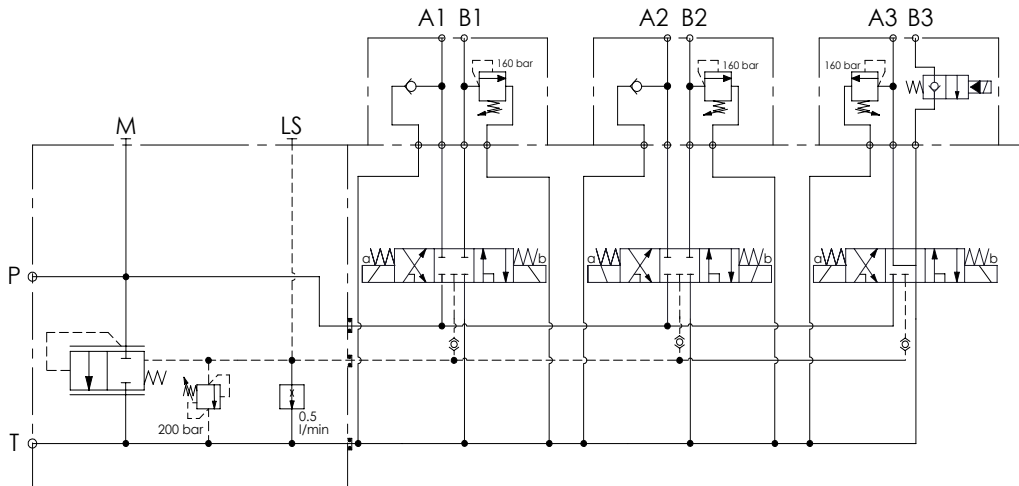
Max. operating pressure:	210 bar (3000 psi)
Rated flow:	40 l/min (11 gpm)
Manifold:	Cast-Iron
Weight:	12,1 kg (26 lbs)
Contamination class to ISO 4406:	See technical spec.
MTTFd:	150 - 1200 years: See technical spec.



NOTES

For other configurations/quick codes not available in this catalogue page please consult factory

SCHEME



ORDERING CODES

Quick code	Description	Ports	Voltage	Connector type:
EB000041	EBLE-040-CCSM-MX-G12-BHRN	A,B: G3/8" P,T: G1/2" M: G1/4"	24V DC	DIN 43650

SALT SPRAYER VALVE

EBLE-040-CCLM

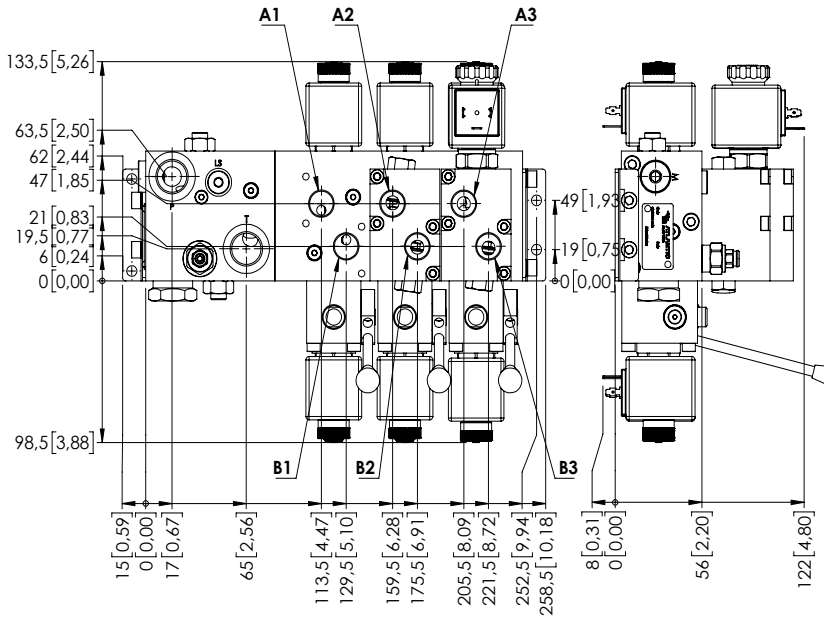


SPECIFICATIONS

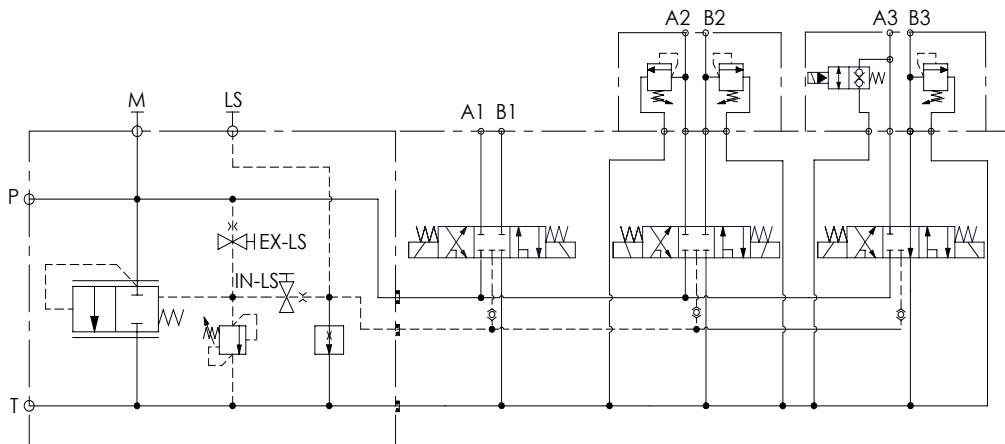
Max. operating pressure:	210 bar (3000 psi)
Rated flow:	40 l/min (11 gpm)
Manifold:	Cast-Iron
Weight:	10,6 kg (23,3 lbs)
Contamination class to ISO 4406:	See technical spec.
MTF _d :	150 - 1200 years: See technical spec.

NOTES

For other configurations/quick codes not available in this catalogue page please consult factory



SCHEME



ORDERING CODES

Quick code	Description	Ports	Voltage	Connector type:
EB000042	EBLE-040-CCLM-MX-G12-BHRN	A,B: G3/8" P,T: G1/2" M: G1/4" LS: G1/8"	24V DC	DIN 43650

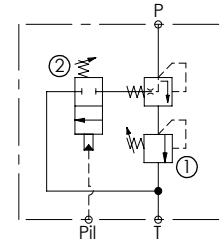
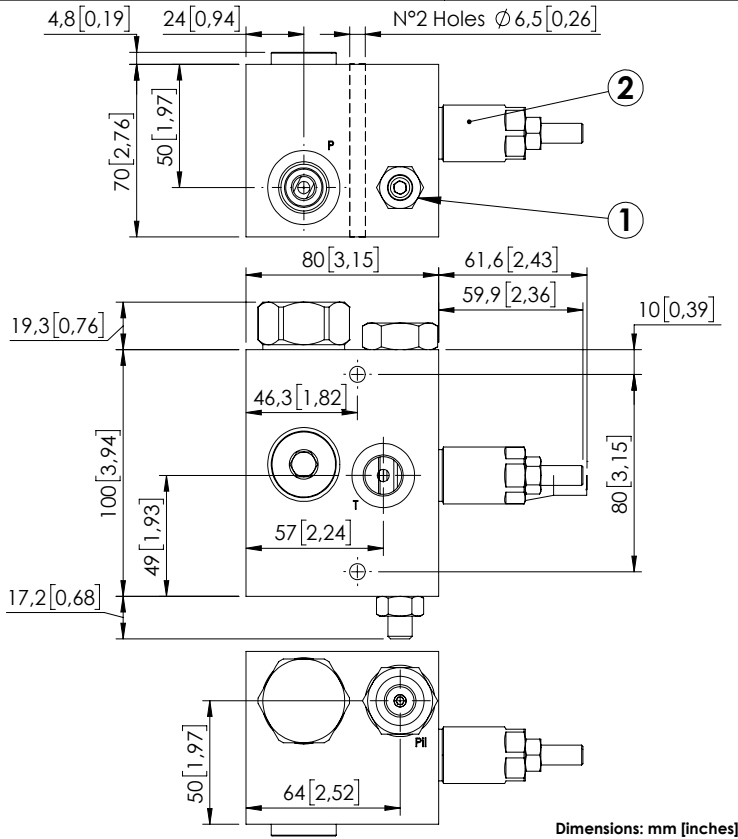
APPLICATIONS - GARBAGE COMPACTORS



Hydraulic scheme	Valve description	Valve type	Rated flow l/min (gpm)	Max. pressure bar (psi)	Installation	Main port size or cavity type	Page
	<p>MTLN-030-TLSL</p>	-	30 (8)	210 (3000)	In line	G 1/2"	20.510
	<p>MDAF-080-BRNR</p>	-	80 (21)	210 (3000)	In line	G 1/2"	20.520
	<p>MRDN-150-ZLNP</p>	-	150 (40)	350 (5000)	In line	G 3/4"	20.530
	<p>BDMN-150-NLBL</p>	-	150 (40)	350 (5000)	In line	G 3/4"	20.540

GARBAGE COMPACTORS

MTLN-030-TLSL



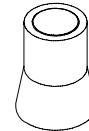
SPECIFICATIONS

Max. operating pressure:	210 bar (3000 psi)
Rated flow:	30 l/min (8 gpm)
Manifold:	Aluminium
Weight:	1,91 kg (4.1 lbs)
Contamination class to ISO 4406:	See technical spec.
MTF _d :	150 - 1200 years: See technical spec.

NOTES

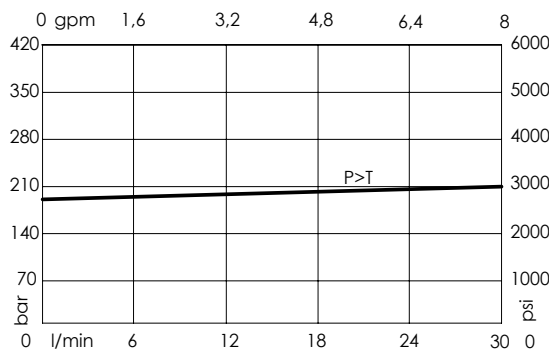
For other configurations/quick codes not available in this catalogue page please consult factory

SEALING CAP



Ordering code:
AT000020

CURVES



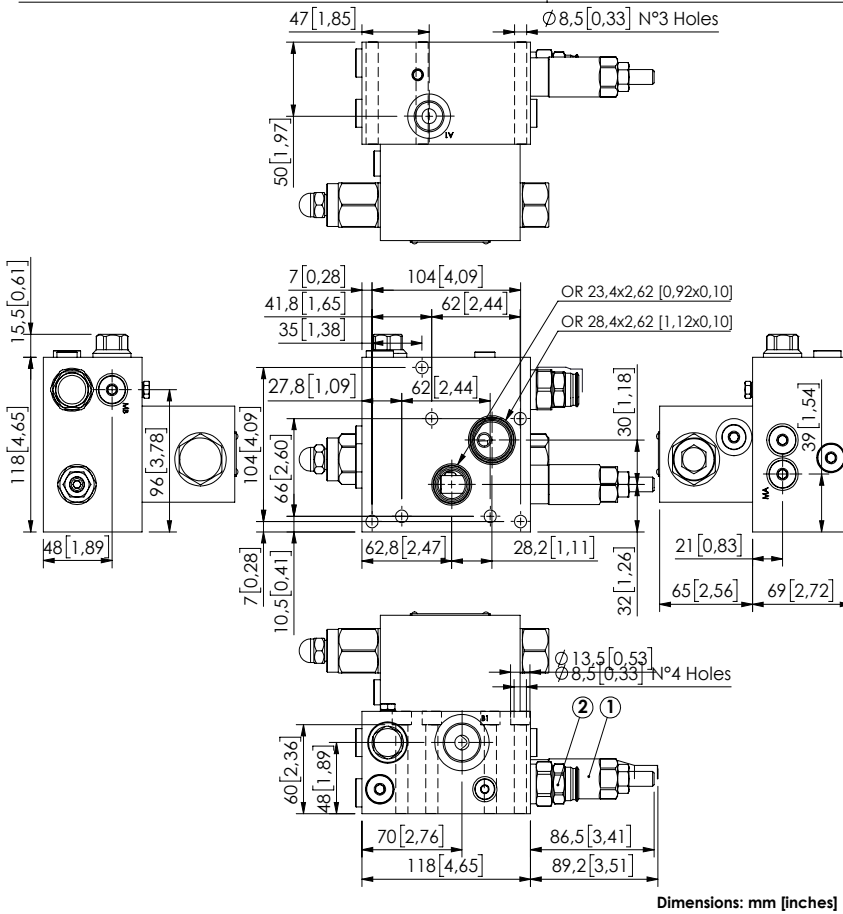
ORDERING CODES

Quick code	Description	Ports	Standard setting Q=5 l/min (1,3 gpm)	Adjustment range	Pressure increase bar/turn (psi/turn)
MT000008	MTLN-030-TLSL-NP-G12-N180	P,T: G 1/2" M: G1/4"	① 180 bar (2600 psi) ② 40 bar (600 psi)	① 40-200 bar (600-2900 psi) ② 10-50 bar (150-700 psi)	① 49 (700) ② 10 (150)

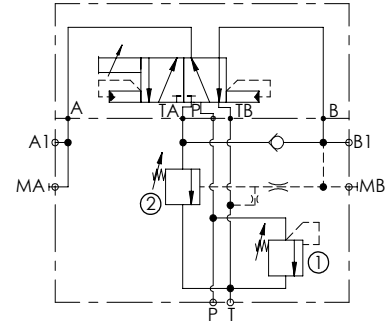
GARBAGE COMPACTORS

MDAF-080-BRNR

REGENERATIVE FUNCTION



Dimensions: mm [inches]



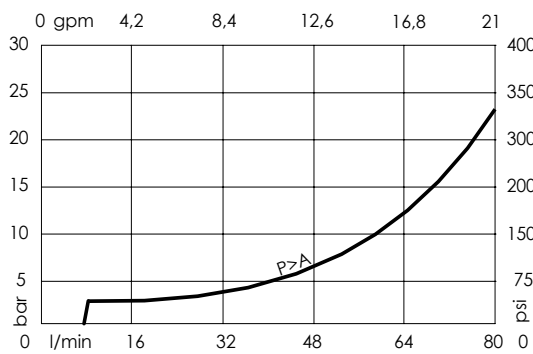
SPECIFICATIONS

Max. operating pressure:	210 bar (3000 psi)
Rated flow:	80 l/min (21 gpm)
Manifold:	Aluminium
Weight:	5,99 kg (13,2 lbs)
Contamination class to ISO 4406:	See technical spec.
MTF_d:	150 - 1200 years: See technical spec.

NOTES

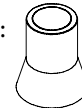
For other configurations/quick codes not available in this catalogue page please consult factory

CURVES

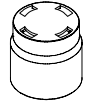


SEALING CAP

Ordering code:
AT000021
(Valve n°1)



Ordering code:
PT000243
(Valve n°2)

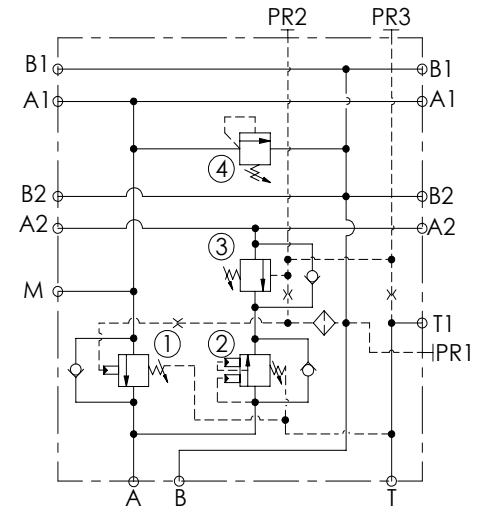
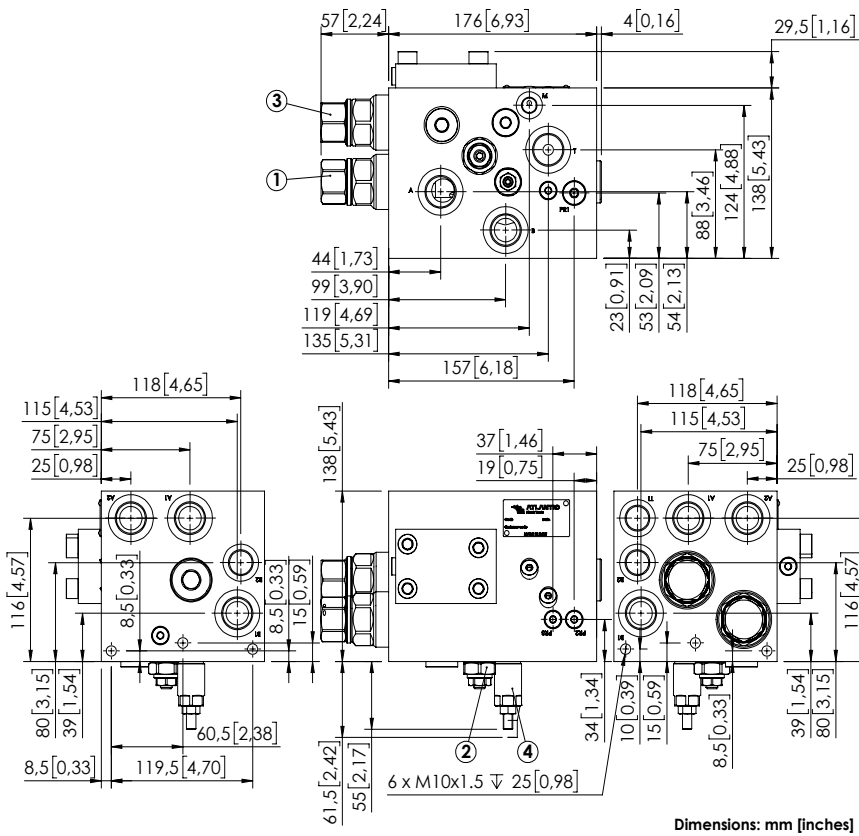


ORDERING CODES

Quick code	Description	Ports	Standard setting Q=5 l/min (1,3 gpm)	Setting range	Pressure increase bar/turn (psi/turn)
MD000023	MDAF-080-BRNR-NP-N10-N210	P,A1: G 1/2" T,B1: G 3/4" MA,MB: G 1/4"	① 180 bar (2600 psi) ② 130 bar (1800 psi)	① 100-350 bar (1500-5000 psi) ② 70-140 bar (1000-2000 psi)	① 42 (600) ② -

GARBAGE COMPACTORS

MRDN-150-ZLNP



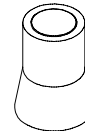
SPECIFICATIONS

Max. operating pressure:	350 bar (5000 psi)
Rated flow:	150 l/min (40 gpm)
Manifold:	Aluminium
Weight:	10,18 kg (22,4 lbs)
Contamination class to ISO 4406:	See technical spec.
MTF _d :	150 - 1200 years: See technical spec.

NOTES

For other configurations/quick codes not available in this catalogue page please consult factory

SEALING CAP



Ordering code:
AT000020

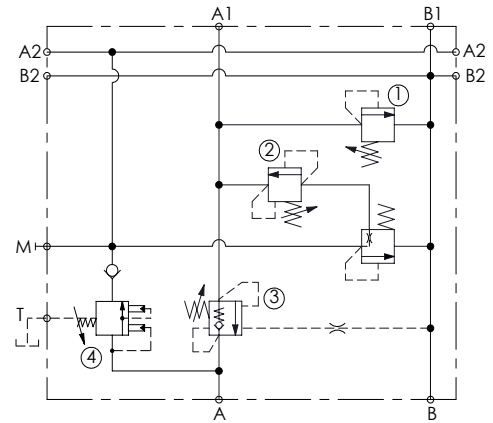
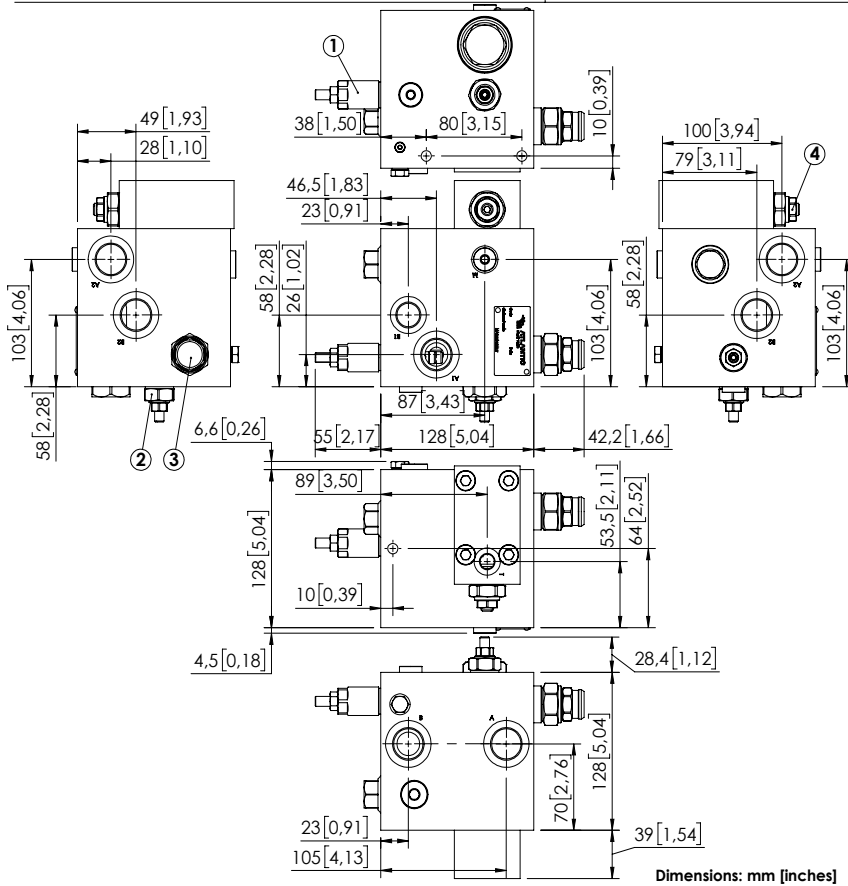
CURVES

ORDERING CODES

Quick code	Description	Pilot ratio	Ports	Standard setting Q=5 l/min (1,3 gpm)	Adjustment range	Pressure increase bar/turn (psi/turn)
MB000700	MRDN-150-ZLNP-06-G34-N350	4:1	A, A1, A2, B, B1, T: G3/4" B2, T1: G1/2" T2, M1, T3: G1/4"	① 300 bar (4300 psi) ② 175 bar (2500 psi) ③ 350 bar (5000 psi) ④ 280 bar (4000 psi)	① 100-350 bar (1500-5000 psi) ② 140-350 bar (2000-5000 psi) ③ 60-210 bar (850-3000 psi) ④ 100-350 bar (1500-5000 psi)	① 105 (1500) ② 70,5 (1000) ③ 62 (850) ④ 91 (1300)

GARBAGE COMPACTORS

BDMN-150-NLBL



SPECIFICATIONS

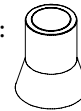
Max. operating pressure:	350 bar (5000 psi)
Rated flow:	150 l/min (40 gpm)
Manifold:	Aluminium
Weight:	6,5 kg (14,3 lbs)
Contamination class to ISO 4406:	See technical spec.
MTTFd:	150 - 1200 years: See technical spec.

NOTES

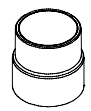
For other configurations/quick codes not available in this catalogue page please consult factory

SEALING CAP

Ordering code:
AT000022
(Valves n°1,2)



Ordering code:
ST000012
(Valve n°3)

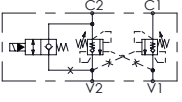
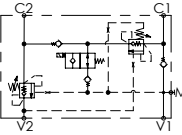
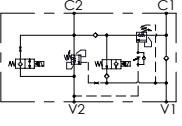
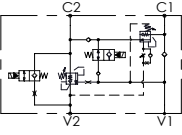


CURVES

ORDERING CODES

Quick code	Description	Pilot ratio	Ports	Standard setting Q=5 l/min (1,3 gpm)	Adjustment range	Pressure increase bar/turn (psi/turn)
BD000131	BDMN-150-NLBL-NP-G34-N350	4:1	A,A1,A2,B,B1,T: G3/4" B1: G1/2" T,M: G1/4"	① 280 bar (4000 psi) ② 50 bar (700 psi) ③ 230 bar (3300 psi) ④ 175 bar (2500 psi)	① 100-350 bar (1500-5000 psi) ② 90-210 bar (1300-3000 psi) ③ 60-210 bar (850-3000 psi) ④ 140-350 bar (2000-5000 psi)	① 91 (1300) ② 87 (1200) ③ 70 (700) ④ 70,5 (1000)

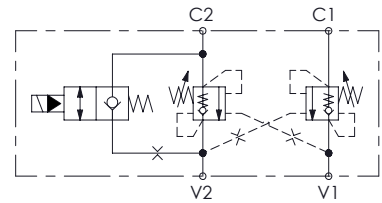
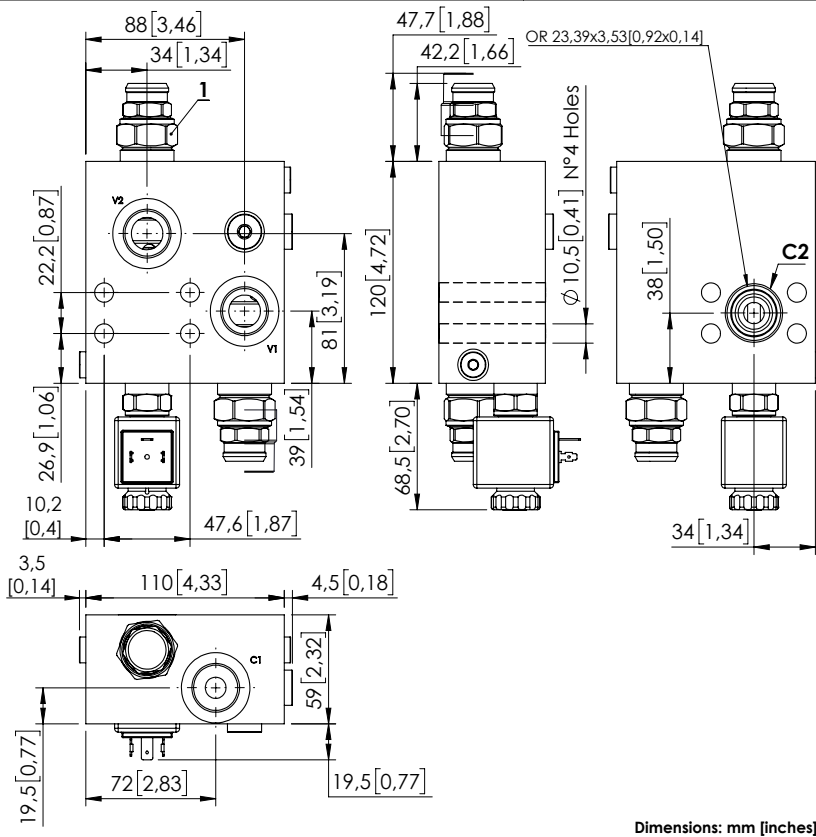
APPLICATIONS - HOOK LOADERS

Hydraulic scheme	Valve description	Valve type	Rated flow l/min (gpm)	Max. pressure bar (psi)	Installation	Main port size or cavity type	Page
	MBDN-150-ZABE	Double acting with electric by-pass	150 (40)	350 (5000)	In line	G 3/4"	20.610
	MBPN-150-ZLNR	Regenerative with electric by-pass	150 (40)	350 (5000)	In line	G 3/4"	20.620
	MRSN-150-ALBE	Regenerative with electric by-pass	150 (40)	350 (5000)	In line	G 3/4"	20.630
	MRLN-150-ZABE	Regenerative with electric by-pass	150 (40)	350 (5000)	In line	G 3/4"	20.640

HOOK LOADERS

MBDN-150-ZABE

DOUBLE ACTING
WITH ELECTRIC BY-PASS



SPECIFICATIONS

Max. operating pressure:	350 bar (5000 psi)
Rated flow:	150 l/min (40 gpm)
Manifold:	Steel
Coil type:	M7
Voltage:	26V
Weight:	2,76 kg (6 lbs)
Contamination class to ISO 4406:	See technical spec.
MTF _d :	150 - 1200 years: See technical spec.

NOTES

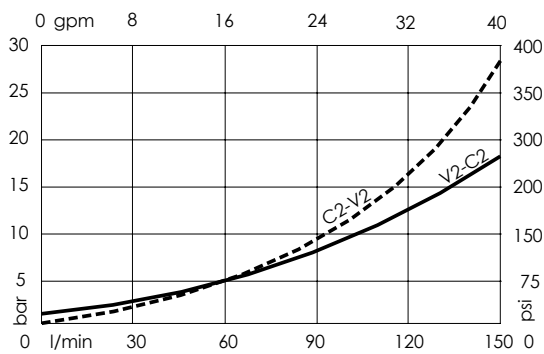
Setting: at least 1.3 times the load induced pressure.
For other configurations/quick codes not available in this catalogue page please consult factory

SEALING CAP



Ordering code:
ST000012

CURVES



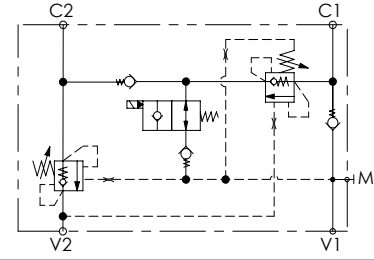
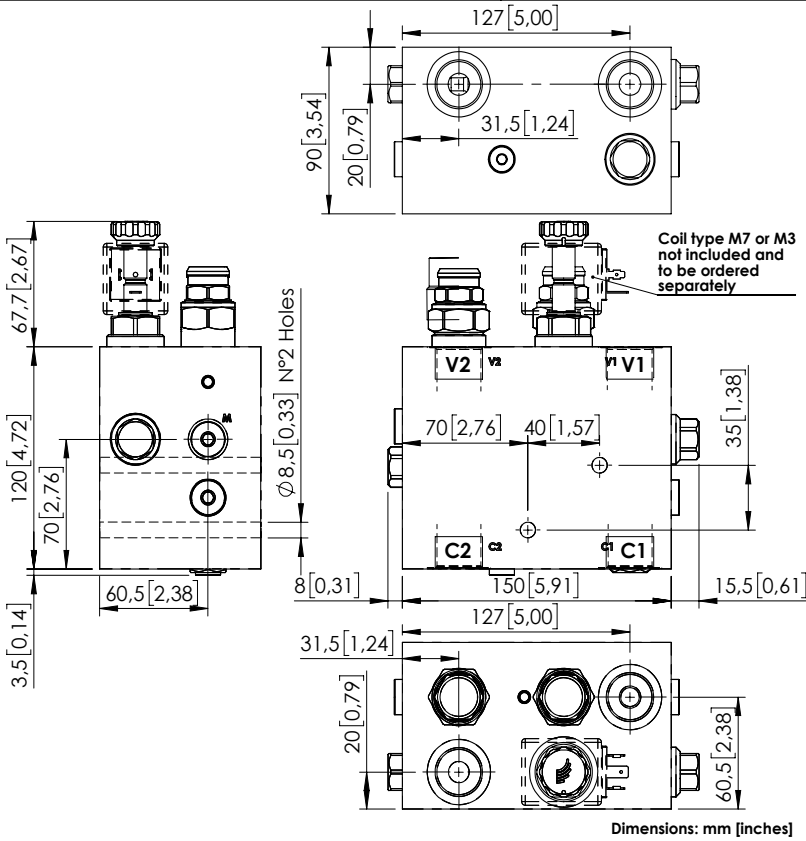
ORDERING CODES

Quick code	Description	Pilot ratio	Ports	Standard setting Q=5 l/min (1,3 gpm)	Adjustment range	Pressure increase
MB000915	MBDN-150-ZABE-04-G34-N350	4:1	V1,V2,C1: G 3/4" C2: 3/4" SAE 6000	350 bar (5000 psi)	100-350 bar (1500-5000 psi)	104 bar/turn (1500 psi/turn)

HOOK LOADERS

MBPN-150-ZLNR

REGENERATIVE
WITH ELECTRIC BY-PASS



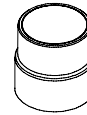
SPECIFICATIONS

Max. operating pressure:	350 bar (5000 psi)
Rated flow:	150 l/min (40 gpm)
Manifold:	Aluminium
Weight:	4,92 kg (10,8 lbs)
Contamination class to ISO 4406:	See technical spec.
MTTF _a :	150 - 1200 years: See technical spec.

NOTES

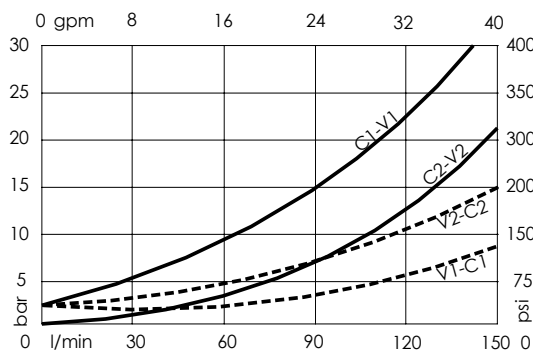
Setting: at least 1.3 times the load induced pressure.
For other configurations/quick codes not available in this catalogue page please consult factory

SEALING CAP



Ordering code:
ST000012

CURVES



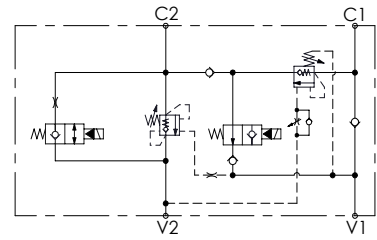
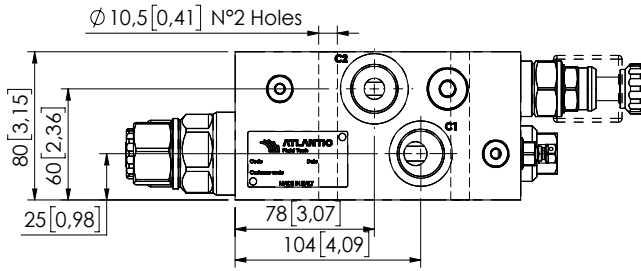
ORDERING CODES

Quick code	Description	Pilot ratio	Ports	Standard setting Q=5 l/min (1,3 gpm)	Adjustment range	Pressure increase
MB000919	MBSN-150-ZLNR-04-G34-N210	4:1	V1,V2,C1,C2: G 3/4" M: G 1/4"	350 bar (5000 psi)	100-350 bar (1500-5000 psi)	104 bar/turn (1500 psi/turn)

HOOK LOADERS

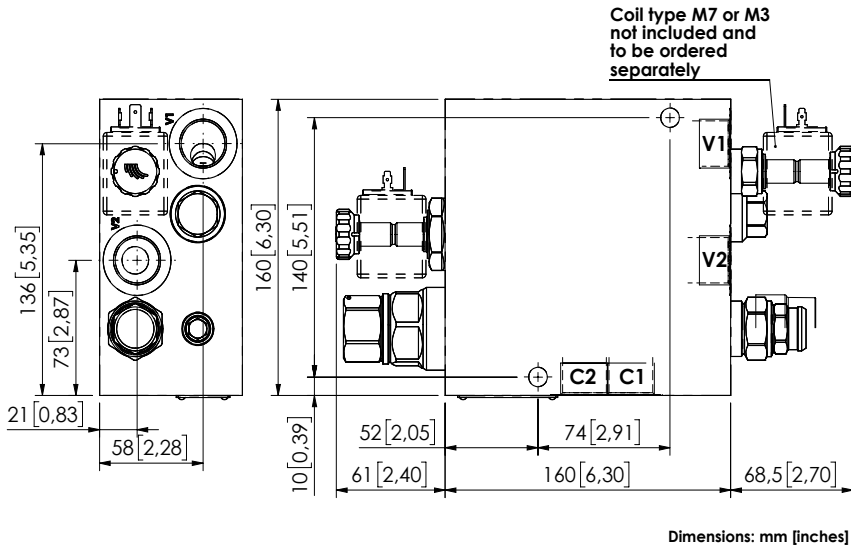
MRSN-150-ALBE

REGENERATIVE WITH ELECTRIC BY-PASS



SPECIFICATIONS

Max. operating pressure:	350 bar (5000 psi)
Rated flow:	150 l/min (40 gpm)
Manifold:	Steel
Coil type:	M7 or M3 type
Weight:	14.95 kg (32.95 lbs)
Contamination class to ISO 4406:	See technical spec.
MTF _a :	150 - 1200 years: See technical spec.

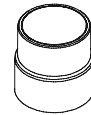


Dimensions: mm [inches]

NOTES

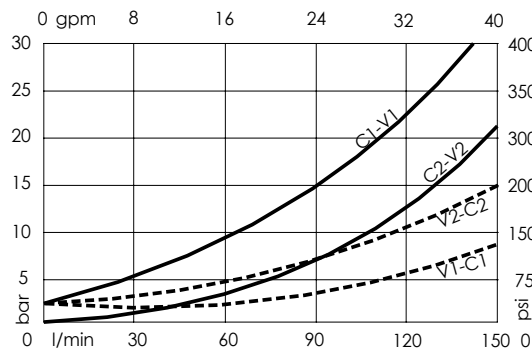
Setting: at least 1.3 times the load induced pressure.
 For other configurations/quick codes not available in this catalogue page please consult factory

SEALING CAP



Ordering code:
ST000012

CURVES



ORDERING CODES

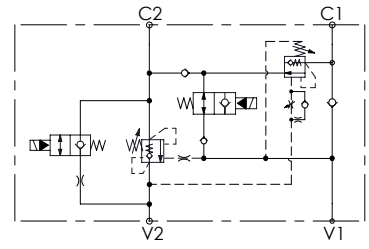
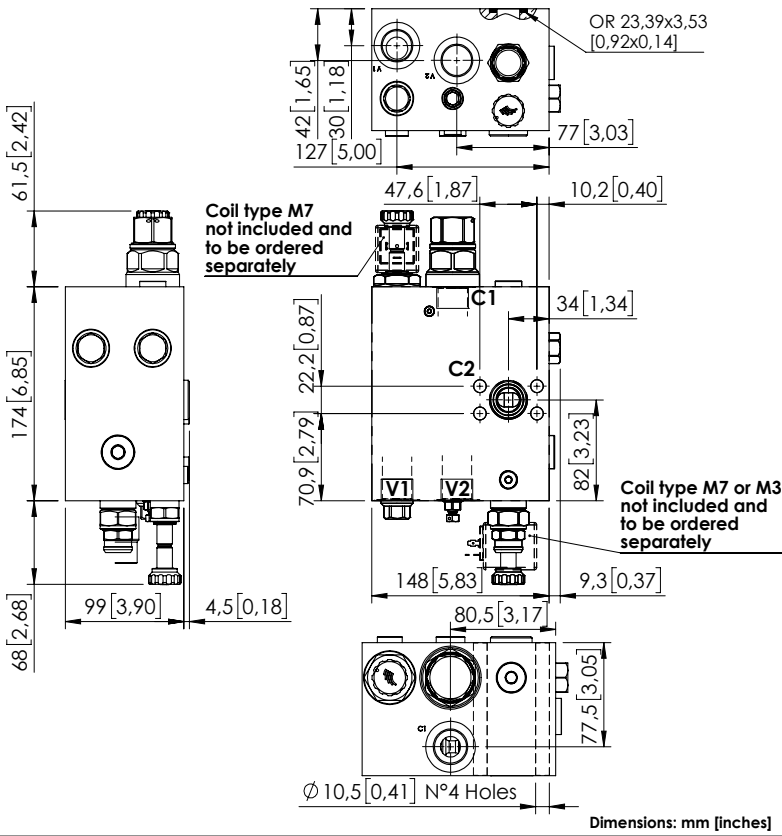
Quick code	Description	Pilot ratio	Ports	Standard setting Q=5 l/min (1.3 gpm)	Adjustment range	Pressure increase
MB000920	MRSN-150-ALBE-04-G34-N350	4:1	V1,V2: G 3/4" C1,C2: G 3/4"	350 bar (5000 psi)	100-350 bar (1500-5000 psi)	104 bar/turn (1500 psi/turn)

HOOK LOADERS



MRLN-150-ZABE

REGENERATIVE WITH ELECTRIC BY-PASS



SPECIFICATIONS

Max. operating pressure:	350 bar (5000 psi)
Rated flow:	150 l/min (40 gpm)
Manifold:	Aluminium
Coil type:	M7 or M3 type
Weight:	7.59 kg (16.7 lbs)
Contamination class to ISO 4406:	See technical spec.
MTF _d :	150 - 1200 years: See technical spec.

NOTES

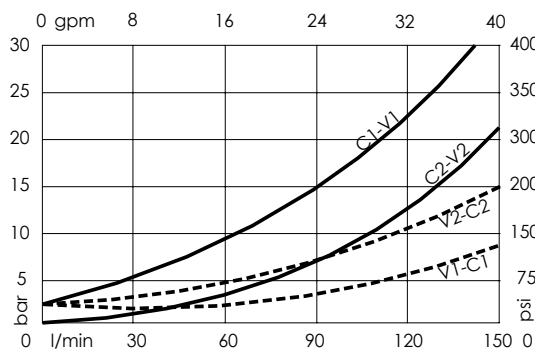
Setting: at least 1.3 times the load induced pressure.
For other configurations/quick codes not available in this catalogue page please consult factory

SEALING CAP



Ordering code:
ST000012

CURVES



ORDERING CODES

Quick code	Description	Pilot ratio	Ports	Standard setting <small>Q=5 l/min (1.3 gpm)</small>	Adjustment range	Pressure increase
MB000119	MRLN-150-ZABE-04-G34-N350	4:1	V1,V2,C1: G 3/4" C2: Ø22	350 bar (5000 psi)	100-350 bar (1500-5000 psi)	104 bar/turn (1500 psi/turn)